

Roll No:

Registration No:

Name:

Date: **05-Jan-2019 -1st Shift**

Examination: **Online Examination - SI**

Section 1 - Online Examination

Question No.1

1.00

Bookmark

The main objective of the industry base Memorandum Scheme is _____.

- (A) Encouraging entrepreneurship and promoting start-up - (Alternative 3)
- (B) Facilitating a relationship between future job seekers and employers - (Alternative 1)
- (C) **Promote ease of doing business - (Alternative 4)**
- (D) Setting up a network of technology and emerging centers - (Alternative 2)

Question No.2

1.00

Bookmark

Trans-Siberian Railway connects St Petersburg to _____.

- (A) Kaliningrad - (Alternative 3)
- (B) Volgograd - (Alternative 1)
- (C) Sochi - (Alternative 2)
- (D) **Vladivostok - (Alternative 4)**

Question No.3

1.00

Bookmark

Mahmud Begda was a famous sultan of which famous empire?

- (A) Jaunpur - (Alternative 3)
- (B) Malwa - (Alternative 4)
- (C) **Gujarat - (Alternative 2)**
- (D) Bengal - (Alternative 1)

Question No.4

1.00

Bookmark

Which statement is not correct with respect to the goods and services tax (GST)?

- (A) Integrated GST will be levied on inter-state goods and services transactions. - (Optional 2)
- (B) **The concept of declared goods of special importance was abated - (Alternative 3)**
- (C) States will get compensation for five years for loss of revenue - (Alternative 4)
- (D) GST will be collected by VAT method - (Optional 1)

Question No.5

1.00

Bookmark

What is the unit of kinetic visibility?

- (A) Candela - (Optional 1)
- (B) **Poise - (Alternative 2)**
- (C) Watts - (Optional 4)

(D) Pascal - (Alternative 3)

Question No.6

1.00

Bookmark

Which of the following continents is also known by the name 'The Dark Continent'?

- (A) Australia - (Alternative 4)
- (B) **Africa - (Alternative 2)**
- (C) Europe - (Alternative 3)
- (D) Asia - (Alternative 1)

Question No.7

1.00

Bookmark

What is the mineral deposited in the soil of the lower hills and valleys in the sand?

- (A) Load Deposit - (Optional 2)
- (B) **Placeer Deposit - (Optional 1)**
- (C) Wayne Deposit - (Optional 4)
- (D) Layered Deposit - (Optional 3)

Question No.8

1.00

Bookmark

Greenland falls under which of the following continents?

- (A) **North America - (Alternative 2)**
- (B) Asia - (Alternative 3)
- (C) Europe - (Alternative 1)
- (D) Antarctica - (Alternative 4)

Question No.9

1.00

Bookmark

How many days are organized for the modern Olympic Games?

- (A) **16 Days - (Optional 1)**
- (B) 30 days - (Optional 3)
- (C) 45 days - (Optional 4)
- (D) 21 days - (Optional 2)

Question No.10

1.00

Bookmark

The ravines are generally found in which river basin of India?

- (A) Periyar - (Alternative 4)
- (B) **Chambal - (Alternative 3)**
- (C) Kaveri - (Alternative 1)
- (D) VaiGi - (Alternative 2)

Question No.11

1.00

Bookmark

Which of the following is the rainiest place in the world?

- (A) Karup River - (Alternative 1)

- (B) Trunky - (Alternative 3)
- (C) Animeidi - (Alternative 4)
- (D) **Monsoon - (Alternative 2)**

Question No.12

1.00

Bookmark

Who has been presided over the first three-member commission for determining the relationship between the Center and the State?

- (A) Veerappa Moily - (Alternative 4)
- (B) MM Punchhi - (Alternative 2)
- (C) P.V. Rajamannar - (Alternative 3)
- (D) **R S. Sarkaria - (Alternative 1)**

Question No.13

1.00

Bookmark

The term "relay" is related to _____

- (A) Throwing - (Alternative 2)
- (B) **Running - (Optional 3)**
- (C) Fencing - (Alternative 4)
- (D) Weightlifting - (Alternative 1)

Question No.14

1.00

Bookmark

How many languages are currently approved in the Indian Constitution?

- (A) 21 - (Optional 4)
- (B) 24 - (Optional 2)
- (C) 26 - (Optional 3)
- (D) **22 - (Optional 1)**

Question No.15

1.00

Bookmark

Which of the following states celebrates Hornbill festival every year?

- (A) Manipur - (Alternative 2)
- (B) **Nagaland - (Alternative 4)**
- (C) Assam - (Alternative 3)
- (D) Sikkim - (Alternative 1)

Question No.16

1.00

Bookmark

In which article is the provision of setting up the Finance Commission in the form of a semi-judicial body?

- (A) Article 3 - (Optional 3)
- (B) **Article 280 - (Alternative 2)**
- (C) Article 101 - (Optional 4)
- (D) Article 279 - (Optional 1)

Question no.17

1.00

Bookmark

Who is the Chairman of the Policy (NITI) Commission?

- (A) **Prime Minister - (Alternative 2)**
- (B) Finance Secretary - (Alternative 3)
- (C) Cabinet Secretary - (Alternative 4)
- (D) Finance Minister - (Alternative 1)

Question No.18

1.00

Bookmark

Who wrote the famous book work formula?

- (A) Kalidas - (Alternative 1)
- (B) Vasumitra - (Alternative 2)
- (C) Mahakashyap - (Alternative 4)
- (D) **Vatsyaayan - (Alternative 3)**

Question No.19

1.00

Bookmark

Who searched the X-ray?

- (A) Johann Wilhelm Ritter - (Optional 1)
- (B) **Wilhelm Conrad Röntgen - (Alternative 2)**
- (C) Antoine Henry Becural - (Alternative 4)
- (D) Isaac Newton - (Alternative 3)

Question No.20

1.00

Bookmark

Converting a large punishment to light sentence is called-

- (A) **Shortening - (Optional 4)**
- (B) Forgive - (Alternative 1)
- (C) Expiration - (Optional 3)
- (D) Punishment - (Alternative 2)

Question no.21

1.00

Bookmark

What is the specialty of making carbon covalent bond with carbon atoms through carbon?

- (A) Electrification - (Alternative 4)
- (B) Ionization - (Optional 1)
- (C) Electrolysis - (Alternative 3)
- (D) **Chaining - (Alternative 2)**

Question no.22

1.00

Bookmark

When was the first inter-state council formed?

- (A) 1993 - (Alternative 4)
- (B) **1990 - (Optional 1)**
- (C) 1991 - (Alternative 2)

(D) 1997 - (Optional 3)

Question no.23

1.00

Bookmark

In which of the following states are the Lepakshi Temple situated?

- (A) Kerala - (Alternative 3)
- (B) Karnataka - (Alternative 2)
- (C) **Andhra Pradesh - (Alternative 1)**
- (D) Tamil Nadu - (Alternative 4)

Question no.24

1.00

Bookmark

Which of the following options is not a personal game?

- (A) Lambuid - (Alternative 2)
- (B) Sprint - (Alternative 1)
- (C) Marathon - (Alternative 4)
- (D) **Kho-Kho - (Alternative 3)**

Question No.25

1.00

Bookmark

Who gave the slogan "Jai Jawan Jay Kisan"?

- (A) Sardar Vallabh Bhai Patel - (Alternative 1)
- (B) Indira Gandhi - (Alternative 4)
- (C) Lalhar Lal Nehru - (Alternative 2)
- (D) **Lal Bahadur Shastri - (Alternative 3)**

Question no.26

1.00

Bookmark

In which financial year India signed the Extended Fund Facility Agreement with the IMF?

- (A) 2011-12 - (Alternative 4)
- (B) **1981-82 - (Alternative 2)**
- (C) 1991-92 - (Optional 1)
- (D) 2001-02 - (Alternative 3)

Question no.27

1.00

Bookmark

An event in which hot sea waves flowing from the Peruvian coastal region is called -.

- (A) Indian Ocean Dipole - (Alternative 3)
- (B) **El Nino - (Alternative 1)**
- (C) Madden-Julian Oscillation - (Alternative 4)
- (D) La Nina - (Alternative 2)

Question no.28

1.00

Bookmark

Khashaba Jadhav, a famous player, belongs to which game?

- (A) Shooting - (Alternative 3)

- (B) **Wrestling - (Alternative 2)**
- (C) Hockey - (Alternative 1)
- (D) Weightlifting - (Optional 4)

Question no.29

1.00

Bookmark

The virtual force generated due to the rotation of the Earth is called-

- (A) Kinetic Force - (Alternative 3)
- (B) **Coriolis force - (Optional 1)**
- (C) Pressure Prevalence - (Optional 4)
- (D) Gravitational Force - (Alternative 2)

Question No.30

1.00

Bookmark

What is the name of antibiotic containing chlorine which is produced by soil containing microorganisms and is effective for the treatment of typhoid fever?

- (A) Chloroquin - (Alternative 2)
- (B) **Chloramphennik - (Alternative 1)**
- (C) Chlorogen - (Alternative 3)
- (D) Chloroethanol - (Alternative 4)

Question No.31

1.00

Bookmark

What is the international governing body associated with table tennis?

- (A) AILA - (Alternative 3)
- (B) **ITTF - (Alternative 2)**
- (C) FITT - (Optional 4)
- (D) APTT - (Optional 1)

Question No.32

1.00

Bookmark

The lighthouse of the Mediterranean Sea is-

- (A) Rainier - (Alternative 4)
- (B) **Stromboli - (Alternative 1)**
- (C) Etna - (Alternative 2)
- (D) Sicily - (Alternative 3)

Question No.33

1.00

Bookmark

Who has the power to make any provision in relation to the acquisition and termination of citizenship?

- (A) President - (Alternative 1)
- (B) Prime Minister - (Alternative 3)
- (C) Cabinet - (Alternative 2)
- (D) **Parliament - (Alternative 4)**

Question No.34

1.00

Bookmark

The administrative reforms commission was initially chaired by _____.

- (A) **Morar G Desai - (Alternative 4)**
(B) Veerappa Moily - (Alternative 2)
(C) Hanumantihya - (Alternative 3)
(D) P.V. RajMannar - (Alternative 1)

Question No.35

1.00

Bookmark

What is the phenomenon of organisms in which female genome develops to form new creatures without fertilization?

- (A) Genome - (Alternative 4)
(B) **Parthenogenesis - (Alternative 3)**
(C) Monogamy - (Alternative 2)
(D) Singemi - (Alternative 1)

Question No.36

1.00

Bookmark

What is the speed of objects relative to the straight line?

- (A) Uniform Speed - (Optional 2)
(B) Transverse Speed - (Optional 3)
(C) Displacement speed - (Optional 4)
(D) **Straight Linear Speed - (Optional 1)**

Question No.37

1.00

Bookmark

Who is the Chairman of the National Development Council?

- (A) **Prime Minister - (Alternative 1)**
(B) President - (Alternative 4)
(C) Finance Minister - (Alternative 2)
(D) Union Home Minister - (Alternative 3)

Question No.38

1.00

Bookmark

The towns of Harappan civilization were placed in _____ pattern.

- (A) Circular Grid - (Optional 4)
(B) **Rectangular grid - (Alternative 2)**
(C) Square Grid - (Alternative 1)
(D) Radial Grid - (Alternative 3)

Question No.39

1.00

Bookmark

According to the Policy (NITI) Commission, how long has the Indian government made a plan to double the income of the farmers?

- (A) **2022 - (Alternative 2)**

- (B) 2025 - (Optional 1)
- (C) 2024 - (Alternative 4)
- (D) 2020 - (Alternative 3)

Question No.40

1.00

Bookmark

Which instrument is measured by the transfer of heat?

- (A) Hydrometer - (Alternative 4)
- (B) Manomer - (Alternative 2)
- (C) **Calorimeter - (Alternative 1)**
- (D) Galvanometer - (Alternative 3)

Question No.41

1.00

Bookmark

Under which article can Parliament set a condition for employment within the state or union territory?

- (A) Article 26 - (Alternative 4)
- (B) Article 15 - (Optional 1)
- (C) Article 19 - (Optional 3)
- (D) **Article 16 - (Alternative 2)**

Question No.42

1.00

Bookmark

The word 'Mahayana' is related to what religion

- (A) Jain - (Alternative 1)
- (B) **Buddhist - (Alternative 4)**
- (C) Shaiv - (Alternative 2)
- (D) Sikh - (Alternative 3)

Question No.43

1.00

Bookmark

By what name is the maintenance of bee hive?

- (A) **Epiculture - (Alternative 4)**
- (B) Aviculture - (Alternative 3)
- (C) Horticulture - (Alternative 1)
- (D) Agriculture - (Alternative 2)

Question no.44

1.00

Bookmark

The ancient Harappan town of Lothal is situated in which state?

- (A) Uttar Pradesh - (Alternative 3)
- (B) Punjab - (Alternative 4)
- (C) **Gujarat - (Alternative 2)**
- (D) Rajasthan - (Alternative 1)

Question No.45

1.00

Bookmark

Hindola castle and ship mansion are related to which regional architecture style?

- (A) **Mandu Area - (Alternative 1)**
- (B) Gujarat Zone - (Alternative 2)
- (C) Area of Kashmir - (Alternative 4)
- (D) Bengal Area - (Alternative 3)

Question No.46

1.00

Bookmark

What is the common name of Peripleneta americana?

- (A) American Frog - (Alternative 1)
- (B) **American Cockroaches - (Alternative 4)**
- (C) American FlatWarm - (Alternative 3)
- (D) American earthquake - (Alternative 2)

Question no.47

1.00

Bookmark

President's Ordinance _____ can be issued

- (A) **As per Parliamentary Act on provisions with similar boundaries - (Optional 2)**
- (B) On the specially mentioned provisions of the President - (Optional 3)
- (C) On any provision of the Constitution - (Alternative 1)
- (D) None of these - (Alternative 4)

Question no.48

1.00

Bookmark

Who established the Chishti sect in India?

- (A) **Moinuddin Chishti - (Alternative 2)**
- (B) Khwaja Nizamuddin Auliya - (Alternative 4)
- (C) Khwaja Saleem Chishti - (Alternative 1)
- (D) Khwaja Qutbuddin Bakhtiar Kaki - (Alternative 3)

Question No.49

1.00

Bookmark

Which of these is not a major tea growing area of India?

- (A) Assam Hills - (Alternative 4)
- (B) Darjeeling Hills - (Alternative 1)
- (C) **Kashmir Valley - (Alternative 3)**
- (D) Nilgiris Hills - (Alternative 2)

Question No.50

1.00

Bookmark

In sports, how many competitions are there in Decathlon?

- (A) 3 - (Optional 1)
- (B) 8 - (Optional 3)
- (C) **10 - (Optional 4)**
- (D) 5 - (Optional 2)

Question No.51

1.00

Bookmark

In this question, a passage and a statement related to it have been given. Read carefully the verse and review the statement based on it.

According to the National Monetary Authority (NMA), the Pune Municipal Corporation (PMC) and the Maharashtra Metro Rail Corporation (Maharashtra-Metro), decided to change the alignment of the Metro project on Ahmednagar Road to protect the Aga Khan Palace. So now the cost of the project will increase to Rs 50 crore for civil works, and the length of the corridor will increase to 900 meters.

Metro officials Atul Gadgil and Prakash Waghmare informed the media on Friday about the decision. "There will be some changes in the Metro corridor near Aga Khan Palace and the length of the route will now increase to 900 meters," the Metro official confirmed this. PMC is yet to give final approval for the planned route.

Statement. The construction of the Metro project will be around 50 crore rupees.

Select one of the following options.

- A. The statement is definitely true.
- B. The statement is probably true.
- C. Statement can not be determined
- D. Statement is definitely wrong.

- (A) **D - (Alternative 4)**
- (B) A - (Alternative 1)
- (C) B - (Alternative 2)
- (D) C - (Alternative 3)

Question No.52

1.00

Bookmark

Change the question mark with the option that follows the logic applied to the first pair.

Plant: Seed :: Flower: ??

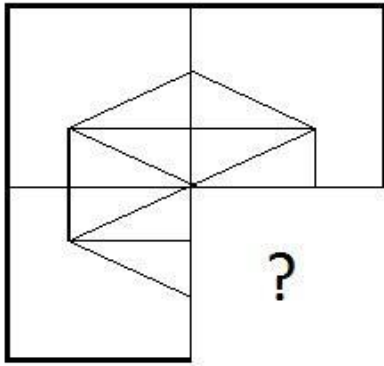
- (A) Beautiful - (Alternative 4)
- (B) **Bud - (Alternative 1)**
- (C) Green - (Alternative 3)
- (D) Taste - (Alternative 2)

Question No.53

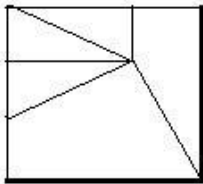
1.00

Bookmark

Select the correct option that will meet the image pattern of the given image.

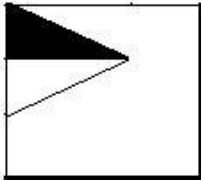


(A)



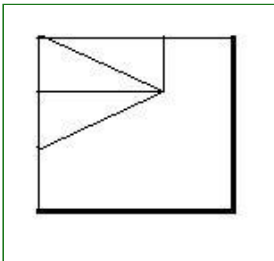
- (Optional 4)

(B)



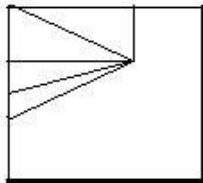
- (Optional 2)

(C)



- (Optional 3)

(D)



- (Optional 1)

Question No.54

1.00

Bookmark

Select the next number in the series.
15, 20, 40, 45, 90,?

(A) 93 - (Alternative 2)

(B) 92 - (Optional 1)

(C) 94 - (Optional 3)

(D) **95 - (Alternative 4)**

Question no.55

1.00

Bookmark

Three statements in this question and three related conclusions have been given to them, assuming that the statements given in the statements to be true are to be considered together on both the findings and to make sure that the information given in the statements is beyond any reasonable doubt Which conclusion is rational?

Statement: There are some wheat, tea. There are some tea, rice, all rice and curry.

Conclusion: i) There are some curry tea.
ii) There are some curries.
iii) All rice is tea.

- (A) **Only i) is logical - (Alternative 2)**
(B) Only ii) and iii) is logical - (optional 3)
(C) Only i) and iii) Logical - (Optional 4)
(D) Either ii) or iii) is logical - (Alternative 1)

Question no.56

1.00

Bookmark

Carefully read the given information and answer the given questions.

The 8 people sitting on the outside of the M, N, O, P, Q, R, S and T sculptors are sitting outside (not necessarily in the same order) in such a way that there is a uniform distance between each of them. There are 5 men and 3 women. No two women are sitting together.

- i) M, which is a man, is sitting opposite S.
ii) T and N are neighbors.
iii) N is sitting on the third place from the right of O, which is a woman.
iv) M is neither Neighbor of Ne, nor is Ne N is neighbor.
v) A person is sitting between S and N.
vi) P is not a neighbor of M but sitting in front of R.

Which of the following options is a pair of men?

- (A) RO - (Optional 1)
(B) TS - (Alternative 2)
(C) NP - (Optional 3)
(D) **QM - (Optional 4)**

Question no.57

1.00

Bookmark

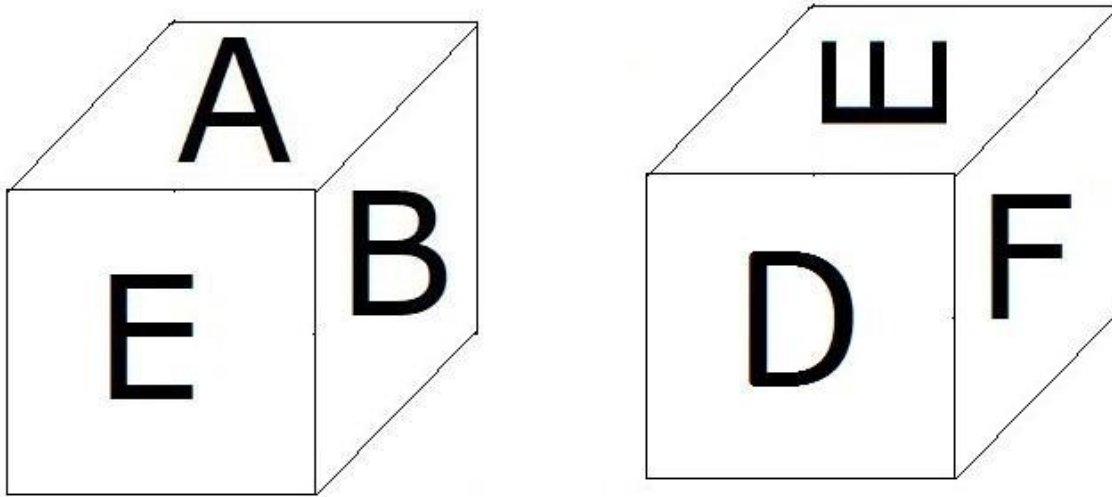
Select the next number in the series.
52, 53, 57, 66, 82,?

- (A) 109 - (Alternative 2)
(B) 114 - (Optional 4)
(C) **107 - (Optional 1)**
(D) 112 - (Optional 3)

Question no.58

1.00

According to the given picture, 6 letters A, B, C, D, E and F are marked on each surface of the dice. Which letter is marked on the surface opposite the surface on which the letter E is printed.

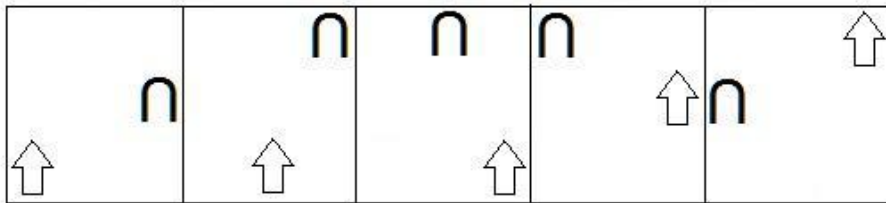


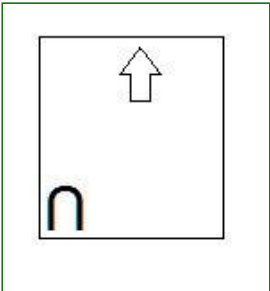
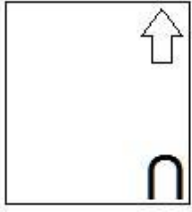
- (A) C - (Alternative 1)
- (B) A - (Alternative 2)
- (C) F - (Optional 3)
- (D) B - (Alternative 4)

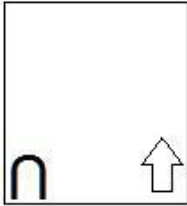
Question No.59

1.00

Select the appropriate picture to come forward in the given series.

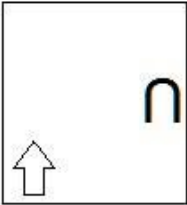


- (A)  - (Optional 2)
- (B)  - (Optional 1)
- (C)



- (Optional 4)

(D)



- (Optional 3)

Question No.60

1.00

Bookmark

Read the following logic and answer the given question.

A @ B is A, B's husband.

A # B is the wife of A, B.

A \$ B is the son of A, B.

A % B is the daughter of A, B.

In the equation $X \% Y @ Z \% W$, how is the relation to the father of X related to W?

- (A) **Son-in-law (alternative 1)**
- (B) Cage - (Alternative 3)
- (C) Father - (Optional 2)
- (D) Nephew - (Alternative 4)

Question No.61

1.00

Bookmark

Change the question mark with the option that follows the logic applied to the first pair.

Television: Electricity :: Car: ??

- (A) Tyre - (Optional 1)
- (B) **Fuel - (Alternative 3)**
- (C) Brake - (Alternative 2)
- (D) Water - (Alternative 4)

Question No.62

1.00

Bookmark

Carefully read the given information and answer the given questions.

8 people sitting on the outside of the table, M, N, O, P, Q, R, S and T are sitting facing the table (not necessarily in the same order) in such a manner that there is a uniform distance between each of them. There are 5 men and 3 women. No two women have been sitting together.

- i) M, which is a man, is sitting opposite S.
- ii) T and N are neighbors.
- iii) N is sitting on the third place from the right of O, which is a woman.

- iv) M is neither Neighbor of Ne, nor is Ne N is neighbor.
- v) A person is sitting between S and N.
- vi) P is not a neighbor of M but sitting in front of R.

How many people are sitting between S and N while counting from the left of N?

- (A) 3 - (Optional 4)
- (B) 4 - (Optional 3)
- (C) 5 - (Optional 2)
- (D) **1 - (Optional 1)**

Question No.63

1.00

Bookmark

Carefully read the given information and answer the given questions.

8 people sitting on the outside of the table, M, N, O, P, Q, R, S and T are sitting facing the table (not necessarily in the same order) in such a manner that there is a uniform distance between each of them. There are 5 men and 3 women. No two women have been sitting close together.

- i) M, which is a man, is sitting opposite S.
- ii) T and N are neighbors.
- iii) N is sitting on the third place from the right of O, which is a woman.
- iv) M is neither Neighbor of Ne, nor is Ne N is neighbor.
- v) A person is sitting between S and N.
- vi) P is not a neighbor of M but sitting in front of R.

Which of the following statements regarding the system is wrong?

- (A) **R is sitting at the third position with the right of S. - (Optional 2)**
- (B) S and P are neighbors. - (Optional 4)
- (C) Q and N are sitting in front of each other. - (Optional 1)
- (D) S and N are women. - (Optional 3)

Question No.64

1.00

Bookmark

A statement in this question and the two conclusions related to them are given in the form of i and ii, assuming that the statements given in the statements to be true are to be considered together on both the findings and to make sure that the information given in the statement Which of the conclusions beyond reasonable doubt is logical?

Statement: Every Monday is a working day. Today is a working day.

Conclusion:

- i. Today is Monday.
- ii. Only Monday is a working day.

Choose the right one from the following options.

- (A) The only conclusion i rational is.

- (B) The only conclusion ii is logical.
- (C) either i or ii conclusion is rational.
- (D) neither i nor ii conclusion is rational.
- (E) i and ii both conclusions are rational.

- (A) B - (Alternative 2)
- (B) E - (Alternative 4)
- (C) A - (Alternative 1)
- (D) **D - (Alternative 3)**

Question No.65

1.00

Bookmark

In this question, a passage and a statement related to it have been given. Read carefully the verse and review the statement based on it.

According to the National Monetary Authority (NMA), the Pune Municipal Corporation (PMC) and the Maharashtra Metro Rail Corporation (Maharashtra-Metro), decided to change the alignment of the Metro project on Ahmednagar Road to protect the Aga Khan Palace. So now the cost of the project will increase to Rs 50 crore for civil works, and the length of the corridor will increase to 900 meters.

Metro officials Atul Gadgil and Prakash Waghmare informed the media on Friday about the decision. "There will be some changes in the Metro corridor near Aga Khan Palace and the length of the route will now increase to 900 meters," the Metro official confirmed this. PMC is yet to give final approval for the planned route.

Statement: Pune Municipal Corporation (PMC) has approved the alignment changes suggested by Maharashtra-Metro.

Select one of the following options.

- A. The statement is definitely true.
- B. The statement is probably true.
- C. Statement can not be determined
- D. Statement is definitely wrong.

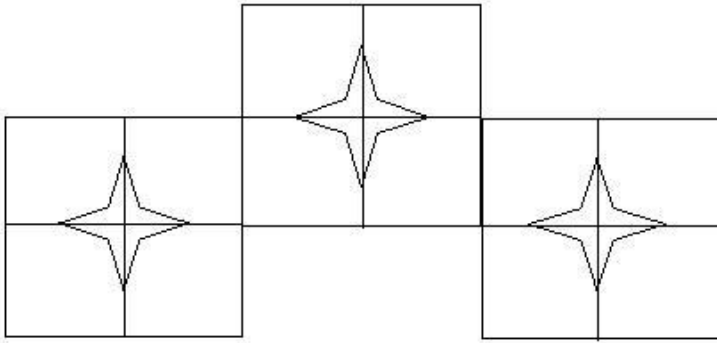
- (A) **D - (Alternative 4)**
- (B) B - (Alternative 2)
- (C) A - (Alternative 1)
- (D) C - (Alternative 3)

Question No.66

1.00

Bookmark

How many classes are there in the given picture?



- (A) 8 - (Optional 4)
 (B) 15 - (Optional 2)
 (C) 13 - (Optional 3)
 (D) 10 - (Optional 1)

Question No.67

1.00

Bookmark

In a certain code language, if BROKE is written UEKHN, how will MIXER be written in the same code language?

- (A) LPAUH - (Optional 4)
 (B) LPTUH - (Optional 3)
 (C) MQSVI - (Optional 1)
 (D) MQUVI - (Alternative 2)

Question No.68

1.00

Bookmark

In this question, there are three statements showing the relation followed by three conclusions i, ii and iii. Assuming the statements as true, decide which conclusions / statements are true in relation to the statements.

Statement. $C \leq U < E$; $C = O > M \geq T$; $M = A > L$

findings.

i) $E > M$

ii) $C \geq T$

iii) $L > T$

- (A) Only iii - (Alternative 4)
 (B) All - (Optional 1)
 (C) Only i - (Optional 3)
 (D) I and ii only - (Alternative 2)

Question No.69

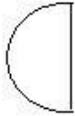
1.00

Bookmark

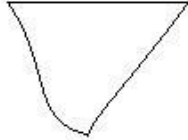
Select the correct option from the given options that can make a full square. (3 of the 5 images are given below)



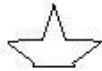
1



2



3



4



5

- (A) 1,3,5 - (Optional 1)
- (B) 1,2,3 - (Optional 4)
- (C) 1,4,5 - (Alternative 2)
- (D) 2,3,4 - (Optional 3)

Question No.70

1.00

Bookmark

Four of the following five are identical in a certain way, so make a group.
Which of these is not related to this group?

Q, M, I, S, T

- (A) T - (Alternative 4)
- (B) S - (Alternative 1)
- (C) Q - (Optional 3)
- (D) M - (Alternative 2)

Question No.71

1.00

Bookmark

Change the question mark with the option that follows the logic applied to the first pair.

Q: H: S: ??

- (A) J - (Alternative 1)
- (B) A - (Alternative 4)
- (C) F - (Alternative 2)
- (D) M - (Alternative 3)

Question No.72

1.00

Bookmark

In a certain code language, if ANNOY is written as ZMMLB, then how will the SOUND be written in the same code language?

- (A) HFLMW - (Alternative 2)
- (B) HLFMW - (Optional 1)
- (C) HLFWN - (Optional 4)
- (D) HLFWM - (Optional 3)

Question No.73

1.00

Bookmark

Kirti's grandmother, the mother of Vivek's mother, is the mother of Manish. Venu is the father of Kirti. How is mother of kirti related to discrimination?

- (A) Grandmother - (Alternative 4)

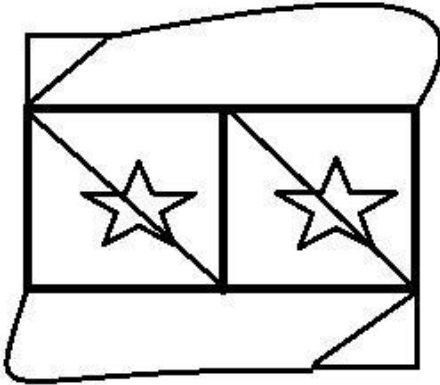
- (B) Aunt - (Alternative 2)
- (C) Mother - (Alternative 3)
- (D) Cage - (Alternative 1)

Question No.74

1.00

Bookmark

How many right angled triangles can be made from the given shape?



- (A) 5 - (Optional 4)
- (B) 4 - (Optional 2)
- (C) 3 - (Optional 3)
- (D) 6 - (Optional 1)

Question No.75

1.00

Bookmark

If a mirror is placed on the shaded line, which of the following options is the correct image of the given figure?



- (A) PIGGLET - (Optional 1)
- (B) PIGGLET - (Optional 4)
- (C)

PIGLET

- (Optional 3)

(D)

PIGLET

- (Optional 2)

Question No.76

1.00

Bookmark

In this question the connection between different elements has been shown in the statement. After the statement two conclusions have been given.

Statement: $M \leq N < O \geq P < Q$

Conclusion:

i) $M \geq P$

ii) $O > M$ Choose the

right from the following options.

(A) The only conclusion i rational is.

(B) The only conclusion ii is logical.

(C) either i or ii conclusion is rational.

(D) neither i nor ii conclusion is rational.

(E) i and ii both conclusions are rational.

(A) C - (Alternative 3)

(B) D - (Alternative 4)

(C) A - (Alternative 1)

(D) **B - (Alternative 2)**

Question No.77

1.00

Bookmark

The two statements in this question and the two conclusions related to them are given in the form of i and ii, assuming that the statements given in the statements to be true are to be considered together at both the conclusions and to make sure that the information given in the statement Which of the conclusions beyond reasonable doubt is logical?

Statement: All teak

, banyan. All are banyan wood.

Conclusion: i) All wood, teak are.

ii) There are some banyan, teak.

Select from the following options,

(A) only conclusions i is logical.

(B) The only conclusion ii is logical.

(C) Either i or ii conclusion is logical.

(D) neither i nor ii conclusion is rational.

(E) i and ii both conclusions are rational.

(A) C - (Alternative 3)

- (B) E - (Alternative 4)
- (C) B - (Alternative 2)
- (D) A - (Alternative 1)

Question No.78

1.00

Bookmark

Five to four in the following are similar in a certain way, so a group is formed. Which of these is not related to this group?

RNJ, LHD, KGC, MIE, PKF

- (A) PKF - (Alternative 3)
- (B) RNJ - (Optional 4)
- (C) KGC - (Optional 1)
- (D) LHD - (Alternative 2)





Question No.79

1.00

Bookmark

Choose the right water image of the given question from the given options.

HINDI

- (A)  - (Optional 4)
- (B)  - (Optional 2)
- (C)  - (Optional 1)
- (D)  - (Optional 3)

Question No. 80

1.00

Bookmark

Select the next number in the series.

61, 63, 66, 71, 78,?

- (A) 98 - (Alternative 2)
- (B) 89 - (Optional 3)
- (C) 90 - (Alternative 4)
- (D) 80 - (Optional 1)

Question No.81

1.00

Bookmark

Change the question mark with the option that follows the logic applied to the first pair.

2018: 22 :: 2022: ??

- (A) 14 - (Optional 3)
- (B) 12 - (Optional 2)
- (C) 16 - (Optional 4)
- (D) 10 - (Optional 1)

Question No.82

1.00

Bookmark

Four of the following five are similar in a certain way, so create a group.

Which of these is not related to this group?

Liquid, Concrete, Solution, Fluid, Juice

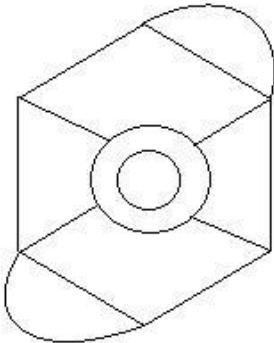
- (A) Juice - (Alternative 4)
- (B) Solution - (Alternative 3)
- (C) Concrete - (Alternative 1)
- (D) Fluid - (Alternative 2)

Question no.83

1.00

Bookmark

How straight lines are there in the given picture?



- (A) 14 - (Optional 2)
- (B) 10 - (Optional 4)
- (C) 12 - (Optional 1)
- (D) 16 - (Optional 3)

Question no.84

1.00

Bookmark

Select the next number in the series.

16, 33, 68, 139, 282, ?

- (A) 569 - (Optional 2)
- (B) 560 - (Optional 1)
- (C) 585 - (Optional 3)
- (D) 570 - (Alternative 4)

Question no.85

1.00

Bookmark

Referring to a girl, a woman says, "She is the daughter of my son-in-law's wife's brother." So how is that woman related to that girl?

- (A) Mother - (Alternative 4)
- (B) **Great Grandmother - (Alternative 3)**
- (C) Aunt - (Alternative 2)
- (D) Grandmother - (Optional 1)

Question no.86

1.00

Bookmark

If the radius of a circle is given up to 19 times, how much of its perimeter will be the perimeter of the previous perimeter?

- (A) 20 - (Optional 3)
- (B) **19 - (Optional 2)**
- (C) 21 - (Optional 4)
- (D) 18 - (Optional 1)

Question No.87

1.00

Bookmark

Selling an item for 440 rupees is the loss of 60% of the profit received on selling the same item in 1000 rupees. Know the purchase price of that item? (In rupees)

- (A) **650 - (Optional 1)**
- (B) 680 - (Optional 4)
- (C) 660 - (Alternative 2)
- (D) 670 - (Alternative 3)

Question no.88

1.00

Bookmark

Tell the product of two numbers, which are LCM 9017 and HCF 1.

- (A) 9015 - (Alternative 4)
- (B) 9011 - (Alternative 2)
- (C) **9017 - (Optional 1)**
- (D) 9013 - (Optional 3)

Question No.89

1.00

Bookmark

In the mixture of 84 liters, the ratio of milk and water is 3: 4. If this ratio is changed to 3: 5, then tell the amount of excess water (in liters) mixed in the mixture.

- (A) 11 - (Optional 3)
- (B) 13 - (Optional 2)
- (C) 14 - (Optional 4)
- (D) **12 - (Optional 1)**

Question No.90

1.00

Bookmark

Martin donated 13% of his salary to an organization working for the blind people, 12% of his salary to the orphanage, 14% of his salary, the institution working for the physically challenged people,

and 16% of his salary Doctoral Assistance Institution The remaining amount of the salary is deposited in the bank for Rs 42,750 monthly expenditure. Find out the amount donated in the orphanage.

- (A) Rs.14,400 - (Optional 4)
- (B) Rs.13,400 - (Optional 3)
- (C) **Rs.14,400 - (Optional 1)**
- (D) Rs 12,400 - (Optional 2)

Question No.91

1.00

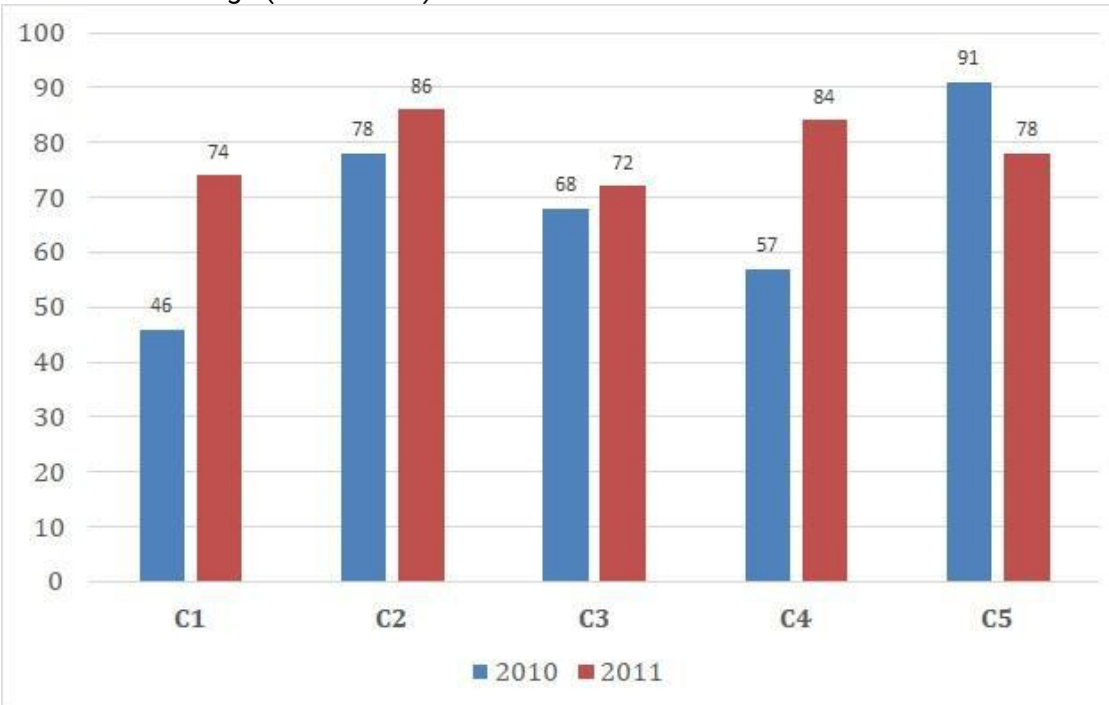
Bookmark

Instructions:

Study the following times graph and answer the question on the basis:

Sales of books (in thousand rupees) given in two successive years of 2010 and 2011 of five branches of a publishing company have been given.

Find out the average (in thousand) of sales for all branches in 2010.



- (A) 72 - (Optional 3)
- (B) **68 - (Alternative 2)**
- (C) 66 - (Optional 1)
- (D) 74 - (Optional 4)

Question No.92

1.00

Bookmark

A person travels from the hostel to the college with a speed of 15 kmph from the bicycle and reaches a 4.5 minute delay. If he runs a bike with a speed of 20 kmph, then it reaches 4.5 minutes. Describe the distance between hostel and college. (In km)

- (A) 8 - (Optional 3)
- (B) 6 - (Optional 1)
- (C) **9 - (Optional 4)**
- (D) 7 - (Optional 2)

Question No.93

1.00

In one box, three different types of old coins are in the ratio of 3: 5: 7, the value of old coins is Rs. 1, 5 and 10 rupees respectively. If the total price of coins kept in the box is 686, then tell the number of old coins of 10 rupees.

- (A) 48 - (Optional 1)
- (B) 51 - (Optional 4)
- (C) 50 - (Optional 3)
- (D) **49 - (Alternative 2)**

Question No.94

1.00

An amount of Rs 7,600 is invested on ordinary interest at an annual rate of 8%. If after 5 years the amount was withdrawn and half the amount of the total amount was invested in the stock market. The remaining amount (in rupees)

- (A) 5,420 - (Optional 1)
- (B) 5,220 - (Optional 3)
- (C) 5,210 - (Optional 2)
- (D) **5,320 - (Optional 4)**

Question No.95

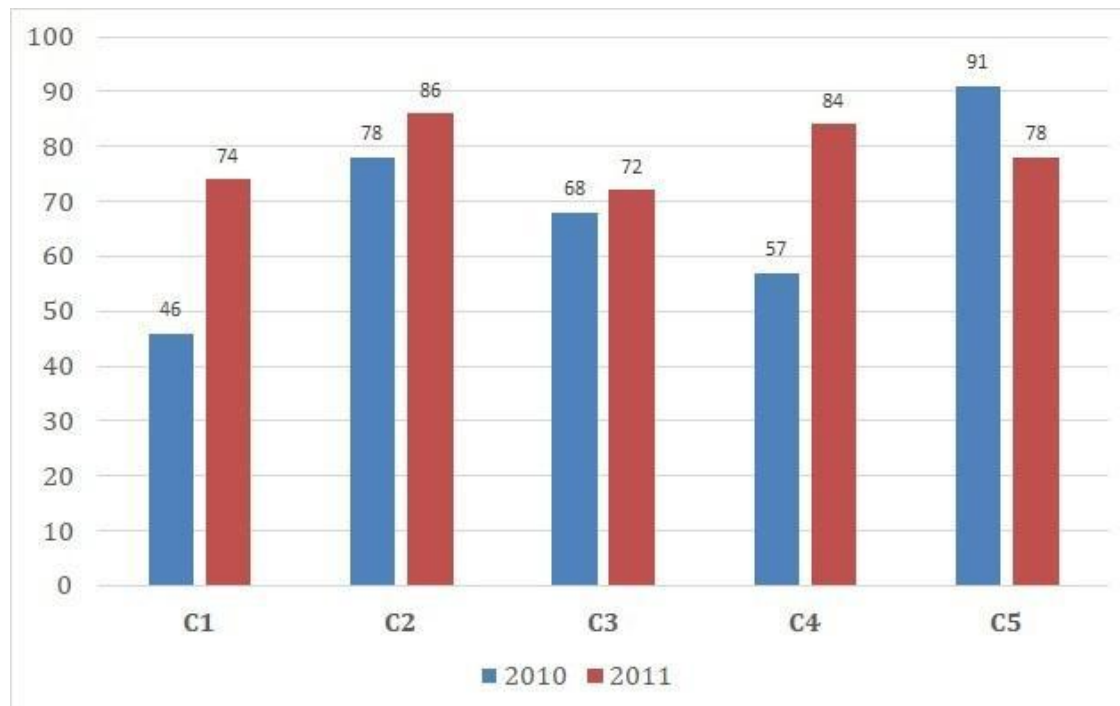
1.00

Instructions.

Study the graph at the following times and answer the question on the basis:

Sales of books (in thousand) has been given in two consecutive years of 2010 and 2011 of five branches of a publishing company.

Find out the ratio of the total sales done in both the years of branch C2 and the total sales volume in both years of branch C4.



- (A) 163: 140 - (Optional 3)
- (B) 161: 138 - (Optional 1)
- (C) **164: 141 - (Optional 4)**

(D) 162: 139 - (Optional 2)

Question No.96

1.00

Bookmark

When a number is divided by 119, the remainder remains 10. When the same number is divided by 17, what will be the remainder?

- (A) 7 - (Optional 1)
- (B) 9 - (Optional 3)
- (C) 8 - (Optional 2)
- (D) **10 - (Optional 4)**

Question No.97

1.00

Bookmark

Solve.

$$324^2 \times 72 \div 18^5 \times 1021 = ?$$

- (A) 4054 - (Optional 1)
- (B) 4064 - (Alternative 2)
- (C) 4074 - (Optional 3)
- (D) **4084 - (Optional 4)**

Question No.98

1.00

Bookmark

375! In the trailing Zeros, let us know.

- (A) **93 - (Optional 3)**
- (B) 94 - (Alternative 4)
- (C) 92 - (Alternative 2)
- (D) 91 - (Optional 1)

Question No.99

1.00

Bookmark

If a shopkeeper hikes the purchasing value of an item by 46% and gives it a discount of 46% on the face value for selling it, then know the total percentage gain or loss it will have?

- (A) 21.16% profit - (Optional 3)
- (B) 20.04% Loss - (Optional 2)
- (C) 20.04% Profit - (Optional 1)
- (D) **21.16% Loss - (Optional 4)**

Question No.100

1.00

Bookmark

Total area of the piece of glass square L444 Cm² is. Which is placed above a table. The width

between the table and the edge of the glass piece is 9 cm. Tell the length of the table | (in cm)

- (A) 54 - (Alternative 2)
- (B) 58 - (Optional 4)
- (C) 52 - (Optional 1)
- (D) **56 - (Optional 3)**

Question No.101

1.00

Bookmark

A train takes 57 seconds to cross the 204 m long bridge. If the same train takes 23 seconds to cross a signal board, tell the length of the train. (In meters)

- (A) **138 - (Optional 3)**
- (B) 128 - (Alternative 2)
- (C) 118 - (Alternative 1)
- (D) 148 - (Alternative 4)

Question No.102

1.00

Bookmark

At the rate of any compound interest rate, it gets tripled in 4 years, in how many years it will become 2187 times its own?

- (A) 22 - (Optional 4)
- (B) 26 - (Optional 1)
- (C) **28 - (Alternative 2)**
- (D) 24 - (Optional 3)

Question No.103

1.00

Bookmark

A person travels at the speed of 16kmph, 24kmph and 12kmph on the surface of an equilateral triangle and the ground. Find the average speed of the entire journey. (In Kmph)

- (A) **16 - (Optional 2)**
- (B) 17 - (Optional 3)
- (C) 15 - (Optional 1)
- (D) 18 - (Optional 4)

Question No.104

1.00

Bookmark

A shopkeeper sells a product in Rs.2,367 and earns 12.5% profit. Tell the amount that is equal to half of the purchase price of the product (in Rs.)

- (A) **1,052 - (Optional 3)**
- (B) 1,062 - (Optional 4)
- (C) 1,042 - (Optional 2)
- (D) 1,032 - (Optional 1)

Question No.105

1.00

Bookmark

Aamir distributed 875 gifts among 4 children. The first part of the child is twice the portion of the other child, three times the size of the third child and four times the fourth child's share. Show the sum of the total gifts received by the first and the second child.

- (A) 610 - (Alternative 2)
- (B) 630 - (Optional 4)
- (C) 620 - (Alternative 3)
- (D) 640 - (Optional 1)

Question No.106

1.00

Bookmark

A gift box has 10 bangles. The average weight of the first 4 bangles is 57gms and the average weight of the remaining 6 bangles is 58 gms. Tell the average weight of all bangles | (in grams)

- (A) 57.4 - (Optional 2)
- (B) 57.2 - (Optional 1)
- (C) 57.6 - (Optional 3)
- (D) 57.8 - (Optional 4)

Question No.107

1.00

Bookmark

The average weight of 71 notebooks kept in a box is 7.1 kg. When a new notebook is placed in the box, then the average is 7.2kg. Specify the weight of the new notebook. (In Kg)

- (A) 14.3 - (Optional 1)
- (B) 14.6 - (Optional 4)
- (C) 14.4 - (Optional 2)
- (D) 14.5 - (Optional 3)

Question No.108

1.00

Bookmark

A bulb producing company found 13% of the total product defective. If the total number of non-defective products is 4959, then specify the number of total defective products.

- (A) 751 - (Alternative 2)
- (B) 731 - (Optional 4)
- (C) 741 - (Optional 3)
- (D) 761 - (Optional 1)

Question No.109

1.00

Bookmark

Find the value of x.

$$\frac{2}{5}(x) + \frac{3}{10}(x) - \frac{3}{5}(x) = 531$$

- (A) 5210 - (Optional 1)
- (B) 5410 - (Optional 3)
- (C) 5310 - (Optional 2)
- (D) 5510 - (Optional 4)

Question no.110

1.00

Bookmark

Vimal received 72 out of 80 marks in French, 91 out of 100 in English, 63 out of 70 in Spanish and 44 out of 50 in Japanese. What was the total percentage achieved by him? (% In)

- (A) 70 - (Optional 1)
(B) 100 - (Optional 4)
(C) 80 - (Optional 2)
(D) **90 - (Optional 3)**

Question No.111

1.00

Bookmark

Sheila walks at the speed of her usual speed (20/21) and determines a clear distance in six minutes more than the time it takes in normal speed. Calculate the normal time it takes in determining a certain distance.

- (A) 130 - (Alternative 2)
(B) **120 - (Optional 1)**
(C) 140 - (Optional 3)
(D) 150 - (Optional 4)

Question no.112

1.00

Bookmark

If the cube with a $26\sqrt{3}$ cm diagonal is melted then how tall is the height of the cuboid, if the length of the cuboid is equal to the arm of the cube, and the width of the cuboid is 13 cm? (in cm)

- (A) **52 - (Optional 1)**
(B) 54 - (Optional 3)
(C) 53 - (Alternative 2)
(D) 55 - (Optional 4)

Question No.113

1.00

Bookmark

Find the value of x.

$$\sqrt{441} \div 21 + \sqrt{484} = 1 \times x$$

- (A) 26 - (Alternative 4)
(B) 25 - (Optional 3)
(C) **23 - (Optional 1)**
(D) 24 - (Optional 2)

Question No.114

1.00

Bookmark

How can 378 mobile phones be shared equally in the students present in the classroom?

- (A) 18 - (Optional 3)

- (B) 16 - (Optional 2)
(C) 14 - (Optional 1)
(D) 12 - (Optional 4)

Question No.115

1.00

Bookmark

An English-based company has 629 men and 629 female employees in a collaborative project. The average attendance of all employees is 72 calls per day. On average, an average 72 calls are received by a male employee every day. What will be the average of the number of calls being added by the women staff daily?

- (A) 72 - (Alternative 2)
(B) 74 - (Optional 4)
(C) 71 - (Optional 1)
(D) 73 - (Optional 3)

Question no.116

1.00

Bookmark

The station master decides that the length of the rectangular digital board is increased by 4% and the width is reduced to 6%. Find out the total change in the area.

- (A) 1.24% reduction - (Optional 1)
(B) 2.24% increase - (Optional 4)
(C) 2.24% reduction - (Optional 2)
(D) 1.24% increase - (Optional 3)

Question No.117

1.00

Bookmark

The difference between earned interest on the same amount invested for 2 years on compound interest and simple interest is Rs. 76. If interest rates are 4% per year, then calculate the amount invested.

(In rupees)

- (A) 51,500 - (Optional 4)
(B) 47,500 - (Optional 1)
(C) 48,500 - (Optional 2)
(D) 49,500 - (Optional 3)

Question no.118

1.00

Bookmark

Solve.

$$15.73 + 13.25 + 16.73 - 28.64 = 3 \times ?$$

- (A) 5.69 - (Optional 3)
(B) 5.49 - (Optional 1)

- (C) 5.59 - (Optional 2)
(D) 5.79 - (Optional 4)

Question No.119

1.00

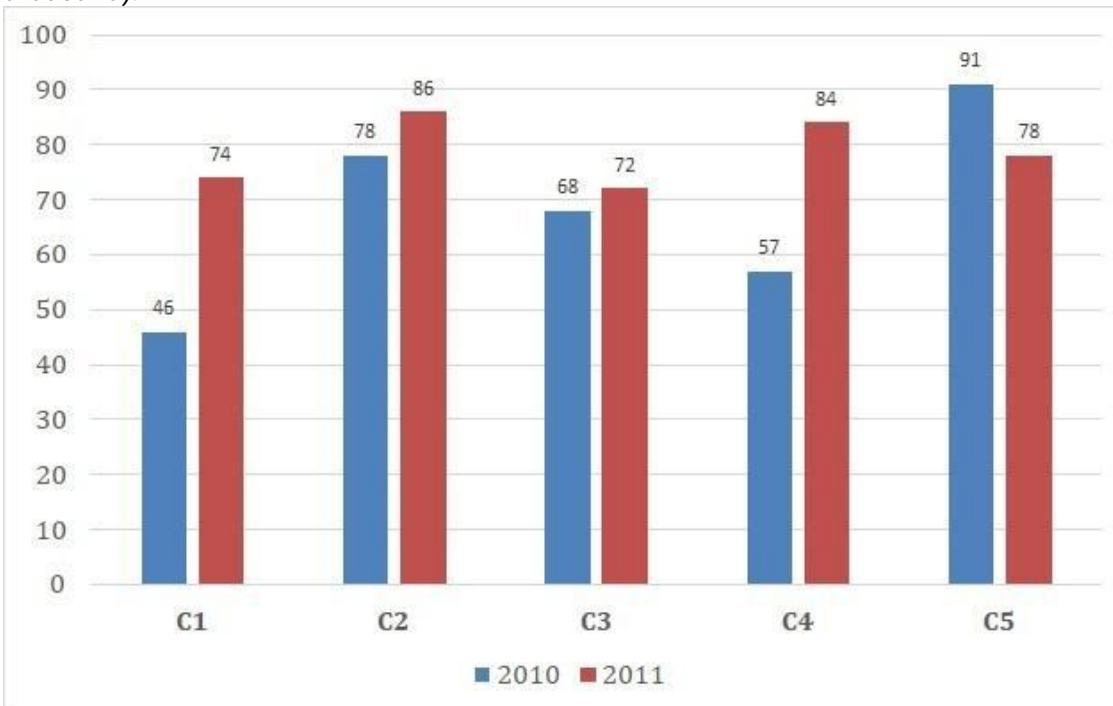
Bookmark

Instructions:

Study the following times graph and answer the question on the basis:

Sales of books (in thousand rupees) given in two successive years of 2010 and 2011 of five branches of a publishing company have been given.

In the last two years, together with the company's branches C1, C3 and C5, make a total sales (in thousand).



- (A) 439 - (Alternative 4)
(B) 419 - (Alternative 2)
(C) 429 - (Optional 3)
(D) 409 - (Optional 1)

Question No.120

1.00

Bookmark

The proportion of salaries of Hameed, Clement and Ganesh is 3: 5: 7, respectively, if Ganesh is getting Rs.892 more from Hameed. What is Clement's salary? (In rupees)

- (A) 1,145 - (Optional 1)
(B) 1,115 - (Optional 4)
(C) 1,125 - (Optional 3)
(D) 1,135 - (Alternative 2)