




12 April 2024

National and International News

<p>CDP-SURAKSHA</p> 	<p>Context;</p> <ul style="list-style-type: none"> • The government has introduced a new digital platform called CDP-SURAKSHA to disburse subsidies to horticulture farmers as part of the Cluster Development Programme (CDP), an initiative to promote horticulture crops and boost the sector's growth. • The CDP-SURAKSHA is essentially a digital platform. • SURAKSHA stands for “System for Unified Resource Allocation, Knowledge, and Secure Horticulture Assistance.” <p>Key points:</p> <ul style="list-style-type: none"> • CDP-SURAKSHA enables instant subsidy disbursement to farmers’ bank accounts using e-RUPI vouchers, facilitating transactions through the National Payments Corporation of India (NPCI). • CDP-SURAKSHA's features include database integration with PM-KISAN, cloud-based server space from NIC, UIDAI validation, eRUPI integration, LGD, content management system, geotagging, and geo-fencing. • e-RUPI is a one-time payment mechanism from NPCI that doesn't require a card, digital payment app, or internet banking access. • It can be shared with beneficiaries via SMS or QR code. • The CDP aims to develop horticulture clusters, with 55 identified clusters and 12 selected for the pilot. • The initiative will cover about 9 lakh hectares and benefit 10 lakh farmers, attracting private investment of Rs 8,250 crore.
--	---



Daily Current Affairs Encyclopedia

Israel Deploys C-Dome Defense System



Context:

- Israel recently deployed the **C-Dome defense system** for the first time to intercept a **suspicious aerial target near the southern city of Eilat.**

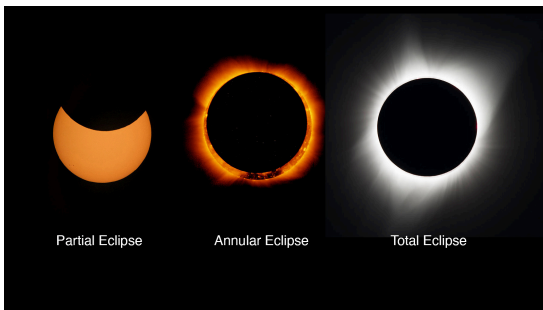
Key points:

- This action came after an alert in the area, which had previously been targeted by missile fire from **Yemen's Houthi rebels.**
- The **C-Dome, a naval adaptation of the Iron Dome**, successfully intercepted the target, marking its maiden operational use.

C-Dome: Naval Adaptation of Iron Dome

- The **C-Dome defense system**, mounted on Sa'ar 6-class corvettes, is the naval counterpart of the land-based Iron Dome.
- Developed by **Rafael Advanced Defence Systems**, the C-Dome employs the same interceptor technology as the **Iron Dome**, providing **robust defense against rocket and missile threats.**
- This operational debut underscores Israel's ongoing efforts to enhance its defensive capabilities in response to evolving security challenges.

Total solar eclipse



Context:

- During the Total Solar Eclipse on **April 8, 2024, North America, Mexico, and Canada experienced a momentary plunge into darkness.**
- The crew members of the International Space Station had a unique perspective, capturing the Moon's shadow cast over Earth.

Solar eclipse and its different types:

- A solar eclipse occurs when the **Moon moves between Earth and the Sun, blocking sunlight either fully or partially.**
- There are **four types of solar eclipses: total, annular, partial, and hybrid.**
- In a total solar eclipse, the **Moon completely blocks the Sun, darkening the sky, and observers may see the Sun's corona.**
- An **annular solar eclipse** happens when the Moon covers the Sun's center, leaving a ring of fire visible.
- A **partial solar eclipse** occurs when the Moon partially covers the Sun, creating a crescent shape.
- Both partial and annular eclipses have regions outside the Moon's shadow seeing a partial eclipse.
- The partial solar eclipse is the most common type.
- The **hybrid solar eclipse is rare**, shifting between



Daily Current Affairs Encyclopedia

total and annular as the Moon's shadow moves.

How often does a solar eclipse take place?

- Solar eclipses occur during the **new moon phase when the Moon and Sun align on the same side of Earth.**
- A new moon happens **approximately every 29.5 days due to the Moon's orbit around Earth.**
- Solar eclipses don't occur every month but **rather between two to five times annually.**
- The Moon's orbit is tilted about five degrees relative to Earth's orbit around the Sun, causing the Moon's shadow to often miss Earth, **resulting in fewer opportunities for solar eclipses.**
- Nodes are points where the Moon's orbit intersects with Earth's orbit, creating opportunities for solar eclipses when the new moon crosses these nodes.

Why is a total solar eclipse so rare?

- Total solar eclipses **occur about once every 18 months.**
- A specific location on **Earth experiences a total solar eclipse only once every 400 years.**
- Total eclipses are rare because they require being within the umbra, the darkest part of the shadow, which covers less than one percent of the Earth's surface during an eclipse.
- **Due to the large portion of Earth being water and uninhabited land, it's rare for many people to witness a total solar eclipse at once.**

Kala Azar



Context:

- India has successfully eliminated **visceral leishmaniasis, commonly known as kala-azar, meeting the target set by the National Centre for Vector Borne Diseases Control (NCVBDC).**
- Initially aiming for elimination by 2010, India extended the target until 2023 due to persistent challenges.
- Kala-azar, a **vector-borne disease transmitted through sandfly bites, has been a significant health challenge in states like Bihar, Jharkhand, West Bengal, and Uttar Pradesh.**

Key points:

- According to the NCVBDC, India reported only **520 cases of kala-azar in 2023**, meeting the World Health Organization's (WHO) elimination criteria, which defines elimination as no block in the country reporting more than one case per 10,000 people.



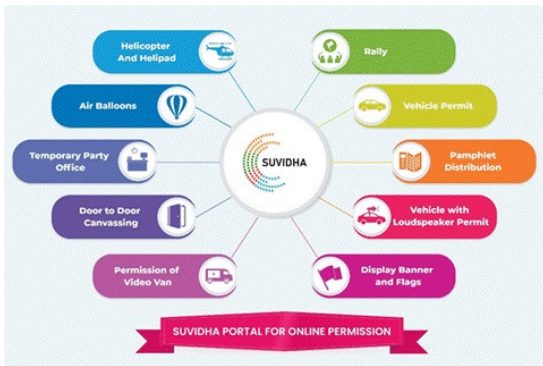
Daily Current Affairs Encyclopedia

- In 2020, India accounted for 18% of the global burden of kala-azar.

About:

- Visceral leishmaniasis, commonly known as kala-azar (KA), derives its name from the **late nineteenth century in India**.
- The term "kala-azar" translates to "**black disease**," describing the **greyish or blackish discoloration of the skin that occurs during infection**.
- This name comes from the Hindi word for black (kala) and the Persian word for disease (azar).
- Kala-azar is a slowly progressing indigenous disease caused by a **protozoan parasite belonging to the genus Leishmania**.
- In India, Leishmania donovani is the **sole parasite responsible for causing this disease**.
- The parasite primarily infects the reticuloendothelial system and is commonly found in **high numbers in the bone marrow, spleen, and liver**.

Suvidha Portal



Context:

- The Suvidha Portal has received over 73,000 applications since the announcement of General Elections 2024.

About:

- It is an **online platform** accessible at <https://suvidha.eci.gov.in>, designed for **political parties and candidates to submit permission requests remotely**.
- The portal also offers offline submission options for inclusivity.
- Managed by **nodal officers across state departments**, the IT platform of Suvidha Portal aims to facilitate the efficient processing of permission requests.
- Additionally, it has a companion app available on iOS and Android platforms, **enabling real-time tracking of request status**.
- One of the key features of the Suvidha Portal is its transparency.
- It provides **real-time tracking of applications, status updates, timestamped submissions, and communication via SMS**.
- This transparency supports the **scrutiny of election expenditures for greater accountability**.
- The Election Commission's commitment is to facilitate a **fair, efficient, and transparent electoral environment**.



- The Suvridha Portal ensures equal access to permissions and clearances for all parties and candidates, aligning with this commitment.

Kerala Regional News

International Day of Human Space Flight



Context:

- The **International Day of Human Space Flight** is celebrated annually on **12 April**.
- It marks the **anniversary of the first human space flight by Yuri Gagarin** in 1961.

About:

- It was proclaimed at the **65th session** of the **United Nations General Assembly** on **7 April 2011**.

Key Points:

- This day celebrates the **dawn of the space age and the incredible achievements in space exploration**.
- It also **highlights the importance of space science and technology** for our well-being and sustainable development.

Theme:

- The theme for International Day of Human Space Flight is **“Encourage scientific curiosity”**.
- It urges individuals and communities to embrace curiosity as a driving force for discovery and innovation.

Did you Know?

- **Yuri Gagarin** was the **first human to travel to space**.

IIM Kozhikode gains 100 spots in QS World list

Context:

- The **Indian Institute of Management Kozhikode (IIM-K)** has achieved a significant improvement in the **QS World University Rankings by Subject**.
- According to the **2024 rankings**, IIM-K jumped **100 spots** to be placed in the **Top 151-200 Institutes globally for Business and Management Studies**.



	<ul style="list-style-type: none"> • This is a major rise from their previous rankings of 251-300 in 2023 and 351-400 in 2022. • This achievement is attributed to IIM-K's strong performance in areas like academic reputation, employer reputation, and research output.
<p>ICAR-IISR's formulations to improve agri productivity</p>	<p>Context:</p> <ul style="list-style-type: none"> • The ICAR-IISR institute in India has developed a couple of beneficial products to improve agricultural productivity, specifically targeting issues with soil quality. <p>Bactogypsum and Trichogypsum:</p> <ul style="list-style-type: none"> • These gypsum-based formulations introduce beneficial microbes to the soil. • By buffering soil pH, they create a more favorable environment for these microbes to thrive. • This improves the soil's physical condition, increases the availability of nutrients, and boosts overall microbial activity, leading to better plant growth. <p>Bactolime:</p> <ul style="list-style-type: none"> • This formulation combines beneficial bacteria (PGPRs) with liming material. • It tackles two problems at once: improving soil pH for crops and delivering helpful microbes to the root zone. • This combined approach enhances nutrient uptake and promotes overall plant health.
<p>19 jaundice cases reported in four days</p>	<p>Context:</p> <ul style="list-style-type: none"> • Rising jaundice cases amid soaring temperatures are creating huge concern among the health workers in Ernakulam. • As many as 19 jaundice cases (hepatitis A) were reported in the last four days in Ernakulam district creating huge concern among health workers <p>About:</p> <ul style="list-style-type: none"> • Jaundice is a condition that causes the skin and the whites of the eyes to turn yellow. • This happens because of a buildup of bilirubin, a yellow waste product made during the normal breakdown of red blood cells.



മലയാളം

ADDAPEDIA

To get free Live Classes,
Materials Scan this QR Code &
Download our Adda247 App



Daily Current Affairs Encyclopedia

- The liver usually filters bilirubin from the blood, but when there's too much bilirubin or the liver isn't working properly, bilirubin builds up in the bloodstream and gets deposited in the skin and eyes.

Copyright © by Adda247

All rights are reserved. No part of this document may be reproduced, stored in a retrieval system or transmitted in any form or by any means, electronic, mechanical, photocopying, recording or otherwise, without prior permission of Adda247.