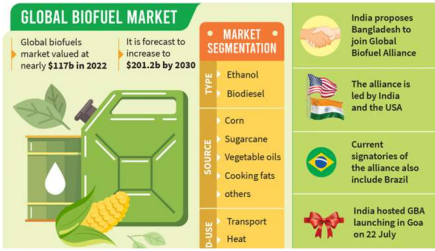




11 May 2024

National and International News

Global biofuel alliance



Why in news?

- The **Global Biofuel Alliance (GBA)** has adopted a new work plan, which will **focus on assessing landscapes of various countries**.
- It includes **drafting policy frameworks related to biofuels**.
- The plan also involves **conducting workshops on biofuels**.

About GBA:

- The Global Biofuel Alliance (GBA) is a **multi-stakeholder alliance** consisting of **Governments, International Organizations, and Industries**.
- It was **launched on the sidelines of the 2023 G20 summit in New Delhi**.
- The GBA is an **initiative by India**.
- It **aims to bring together the biggest consumers and producers of biofuels** to drive their development and deployment.
- It also **aims to contribute to jobs and economic growth**.

Sonai Rupai Wildlife Sanctuary

Why in news?

- The **National Green Tribunal (NGT)** has asked Assam's Chief Secretary to provide details of officers, who allowed the **construction of polling stations, schools, and other activities in Sonai Rupai Wildlife Sanctuary and the adjoining Charduar Reserve forest**.
- These constructions are in **gross violation of the Forest (Conservation) Act, 1980**.

About Sonai Rupai Wildlife Sanctuary:

- The Sonai Rupai Wildlife Sanctuary is a protected area located in **Assam**.
- It is **located along the foothills of the Great Himalayan Range**.
- **Four rivers flow through the sanctuary:** Gabharu, Gelgeli, Sonai, and Rupai.
- The sanctuary is home to a variety of mammals including the **tiger, lesser cats, elephant, gaur, wild boar, pygmy hog, swamp deer, and barking deer**.
- It also hosts a variety of birds including the **white-winged wood duck, hornbill, pelican, and various migratory birds**.
- Reptiles such as the **python and Russell's viper** can also be found in the sanctuary.



मराठी

Batagay Crater in Siberia



Why in news?

- A new **study** has been conducted on a huge crater in Siberia's **permafrost**.
- The study found that the **crater is growing by 35 million cubic feet every year**.

About Batagay Crater in Siberia:

- The huge crater in Siberia's permafrost is also known as the "**gateway to the underworld**" by some locals in Russia's Sakha Republic.
- It is **located in Russia's Far East** and **forms the world's biggest permafrost crater**.
- The crater, also referred to as a **megaslump**, features a **rounded cliff face**.
- Scientists believe that the **crater is the result of a melting permafrost land**, which was frozen during the **Quaternary Ice Age** 2.58 million years ago.

U.N. Counter-Terrorism Trust Fund (CTTF)

Why in news?

- **India has made a contribution of \$500,000** to the **U.N. Counter-Terrorism Trust Fund (CTTF)**.
- The contribution is a **voluntary financial contribution** from India towards the CTTF.

About CTTF:

- The U.N. Counter-Terrorism Trust Fund (CTTF) was **established in 2009** and **transferred to the UN Office of Counter-Terrorism (UNOCT) in 2017**.
- The **Fund accepts contributions** from various entities including **Governments, inter-governmental and non-governmental organizations, private institutions, and individuals**.
- **India's contribution is intended to support UNOCT's global programmes**, primarily the **Countering Financing of Terrorism (CFT)** and **Countering Terrorist Travel Programme (CTTP)**.
- These programmes **aim to build capacities of the member states of eastern and southern Africa** to combat the critical issues of financing of terrorism and prevent the movement and travel of terrorists.



मराठी

ADDAPEDIA

To get free Live Classes,
Materials Scan this QR Code &
Download our Adda247 App



Daily Current Affairs Encyclopedia

Trichoderma asperellum

Why in news?

- The Punjab Agricultural University (PAU), Ludhiana, has developed a biocontrol agent named Trichoderma asperellum (2% WP).
- This biocontrol agent has been registered with the Central Insecticides Board and Registration Committee (CIBRC).

Key points:

- The agent will help farmers in Punjab manage the deadly 'foot rot' or 'bakanae' disease.
 - It is a fungal disease.
- This disease affects the crops of Basmati rice.
- The biocontrol agent offers a non-chemical alternative to traditional pesticides.
- It aids in disease management for crops.
- It helps in minimizing environmental harm.

Copyright © by Adda247

All rights are reserved. No part of this document may be reproduced, stored in a retrieval system or transmitted in any form or by any means, electronic, mechanical, photocopying, recording or otherwise, without prior permission of Adda247.

BILINGUAL
ADDAPEDIA
e-Books

NATIONAL |
INTERNATIONAL |
REGIONAL |
STATE SPECIFIC
CURRENT AFFAIRS
CURATED NOTES

IMPORTANT FOR ALL COMPETITIVE EXAMS