

**CAT 2023**

**Mock Test Navigation Guide**

# CAT 2023



## MOCK TEST NAVIGATION GUIDE

|   |    |
|---|----|
| <b>Overview of Mock Test Navigation Guide</b> .....   | 3  |
| <b>Section A: Steps to Navigate to CAT 2023 Mock Test Link</b> .....                          | 3  |
| 1. Click on Mock Test Link available on CAT 2023 official website .....                       | 3  |
| 2. *Enter your Registration Number and password and click on Sign In .....                    | 3  |
| 3. Post login, click F11 button read through the “General Instructions for Candidate” .....   | 3  |
| 4. Click on NEXT to move to the next page .....   | 4  |
| 5. Read through “Other Important Instructions for Candidate:” .....                           | 4  |
| 6. Click on the disclaimer check box on “Other Important Instructions for Candidate:” .....   | 5  |
| 7. Click on “I am ready to begin” to begin your Mock Test .....                               | 5  |
| 8. Candidates will see the first question of first section and the CAT Mock Test starts ..... | 6  |
| <b>Section B: General guide on various features on Candidate Mock Test Screen</b> .....       | 7  |
| 1. Calculator: .....  | 7  |
| 2. Timer: .....   | 7  |
| 3. Question Palette .....   | 8  |
| 4. Expand the question area: .....  | 8  |
| 5. Scrolling .....  | 8  |
| 6. Answering a question .....   | 9  |
| 7. Changing the response .....  | 9  |
| 8. Navigating through sections .....  | 10 |
| 9. Zoom .....   | 10 |

# CAT 2023



## Overview of Mock Test Navigation Guide

**Mock Test Navigation Guide** will describe the steps as how to access CAT 2023 MOCK Test Link. CAT 2023 MOCK Test Link offers CAT 2023 aspirants to access an online CAT 2023 Mock Test to become familiar with computer-based test's instructions, procedures, and features. Mock Test link is accessible from the official CAT 2023 website, [www.iimcat.ac.in](http://www.iimcat.ac.in)

### Section A : Steps to Navigate to CAT 2023 Mock Test Link

1. Click on Mock Test Link (also available on CAT 2023 official website):

- <https://www.digialm.com/OnlineAssessment/index.html?756@@M22>
- <https://www.digialm.com/OnlineAssessment/index.html?756@@M24> – PwD Candidates (Blindness/Low Vision)
- <https://www.digialm.com/OnlineAssessment/index.html?756@@M23> – Other PwD Candidates

2. \*Enter your Registration Number and password and click on Sign In

The screenshot shows a login form titled "Login". It has two input fields: the first for a registration number (containing "11111") and the second for a password (containing "\*\*\*\*\*"). Below these fields is a blue "Sign In" button. A red arrow points to the "Sign In" button.

***[\*Since this is a mock test, a dummy registration number and dummy password has already been embedded. Candidates can proceed by just clicking on Sign In.]***

3. Post login, click F11 button and read through the “General Instructions for Candidate”

The screenshot shows the "Instructions" page. It contains a list of general instructions for candidates. At the bottom, there is a table with columns for SR No., Question Number with Status, and Meaning. A "Next >" button is visible at the bottom right.

| SR No. | Question Number with Status | Meaning |
|--------|-----------------------------|---------|
|        |                             |         |

# CAT 2023




## 4. Click on NEXT to move to the next page:

### Instructions

**General Instructions for a Candidate:**

- The test has 3 (three) sections. The total duration of the test is 120 minutes. PwD candidates will have 13 minutes and 20 seconds extra time for each section.
- The time allotted to each section is 40 minutes (53 minutes and 20 seconds for PwD candidates). As soon as you start answering a section, the clock (displayed on the top right corner of the screen) will start. On completion of 40 minutes, the clock will stop, the particular section will be locked, and the responses to questions in that section will be auto-submitted. You will then need to move to the next section and start answering the next set of questions. The same process will be repeated for the other two sections. On submission of all three sections, a summary of your answers will be displayed on your screen.
- For PwD candidates the process will be the same as above. The only exception is that, for each section, the PwD candidate will have 53 minutes and 20 seconds, with an option for submitting the answers of a section at any point of time after the completion of 40 minutes. Thus, PwD candidates will have the option to complete the entire test with all three sections within a maximum of 160 minutes.
- You will be allowed to leave the test hall only after a minimum of 120 minutes.
- The question paper will have a mix of Multiple Choice Question (MCQ) type with options and Non-MCQ type.
- Your time will be set and synchronized to the server clock. The Countdown Timer at the top right corner of your screen will display the remaining time available to you to complete the currently active section. When the timer reaches zero, the test for that section will automatically end. PwD candidates will be allowed to complete a section at any point of time between duration of 40 minutes and 53 minutes and 20 seconds by clicking on the 'Submit' button. After 53 minutes and 20 seconds, however, the test for the section will automatically end.
- A writing pad will be provided to the candidates for rough work, which will have to be returned after the test. Please note that only one writing pad will be provided to you. Candidates should clearly write their name and registration number on the writing pad.
- An on-screen calculator will be provided, which can be used for computing. You will not be allowed to use any other calculator, computing machine, or device.
- The question palette displayed on the right side of the screen will show the status of each question with the help of one of the following symbols:

| SR No. | Question Number with Status | Meaning |
|--------|-----------------------------|---------|
|        |                             |         |

 **Next >**



M Sharma

## 5. Read through "Other Important Instructions for Candidate:"

### Other Important Instructions

- To login, enter your registration number and password following instructions provided to you by the invigilator.
- Go through the various symbols used in the test and understand their meaning before you start the test.
- The question paper consists of 3 (three) sections:

| Section | Test   |
|---------|--|
| I       | Verbal Ability and Reading Comprehension (VARC)  |
| II      | Data Interpretation and Logical Reasoning (DILR) |
| III     | Quantitative Ability (QA)                        |
- For the Data Interpretation and Logical Reasoning (DILR) section, each situation/scenario consists of a group of four or six questions. Similarly, for Reading Comprehension, each passage consists of a group of 4 questions.
- For an MCQ, a candidate will be given 3 (three) marks for a correct answer, -1 (minus one) mark for a wrong answer and a 0 (zero) mark for an un-attempted question.
- For a Non-MCQ, a candidate will be given 3 (three) marks for a correct answer, and a 0 (zero) mark for a wrong answer and for an un-attempted question. There will be no negative mark for a wrong answer in a Non-MCQ.
- An MCQ will have choices out of which only one will be the correct answer. The computer allotted to you at the test center runs on a specialized software that permits you to select only one answer for an MCQ. You will have to choose the correct answer by clicking on the radio button ( ) placed just before the option. For a Non-MCQ, you will have to enter the answer in the space provided on the screen using the on-screen keyboard.

"I have read and understood all the above instructions. I have also read and understood clearly the instructions given on the admit card and shall follow the same. I also understand that in case I violate any of these instructions, my candidature is liable to be cancelled. I also confirm that at the start of the test all the computer hardware allotted to me are in proper working condition.

I will not disclose, publish, reproduce, transmit, store, or facilitate transmission and storage of the contents of the CAT or any information therein in whole or part thereof in any form or by any means, verbal or written, electronically or mechanically for any purpose. I am aware that this shall be in violation of the Indian Contract Act, 1872 and/or the Copyright Act, 1957 and/or the Information Technology Act, 2008. I am sure that such action shall constitute a criminal offence and shall constitute a punishable offence punishable with imprisonment for a term up to...

**< Previous** **I am ready to begin**




M Sharma

# CAT 2023



## 6. Click on the disclaimer check box on “Other Important Instructions for Candidate:” page

### Other Important Instructions

  
**M Sharma**

1. To login, enter your registration number and password following instructions provided to you by the invigilator.
2. Go through the various symbols used in the test and understand their meaning before you start the test.
3. The question paper consists of 3 (three) sections:
 

| Section | Test   |
|---------|--|
| I       | Verbal Ability and Reading Comprehension (VARC)  |
| II      | Data Interpretation and Logical Reasoning (DILR) |
| III     | Quantitative Ability (QA)                        |
4. For the Data Interpretation and Logical Reasoning (DILR) section, each situation/scenario consists of a group of four or six questions. Similarly, for Reading Comprehension, each passage consists of a group of 4 questions.
5. For an MCQ, a candidate will be given 3 (three) marks for a correct answer, -1 (minus one) mark for a wrong answer and a 0 (zero) mark for an un-attempted question.
6. For a Non-MCQ, a candidate will be given 3 (three) marks for a correct answer, and a 0 (zero) mark for a wrong answer and for an un-attempted question. There will be no negative mark for a wrong answer in a Non-MCQ.
7. An MCQ will have choices out of which only one will be the correct answer. The computer allotted to you at the test center runs on a specialized software that permits you to select only one answer for an MCQ. You will have to choose the correct answer by clicking on the radio button ( ) placed just before the option. For a Non-MCQ, you will have to enter the answer in the space provided on the screen using the on-screen keyboard.

I have read and understood all the above instructions. I have also read and understood clearly the instructions given on the admit card and shall follow the same. I also understand that in case I violate any of these instructions, my candidature is liable to be cancelled. I also confirm that at the start of the test all the computer hardware allotted to me are in proper working condition.


I will not disclose, publish, reproduce, transmit, store, or facilitate transmission and storage of the contents of the CAT or any information therein in whole or part thereof in any form or by any means, verbal or written, electronically or mechanically for any purpose. I am aware that this shall be in violation of the Indian Contract Act, 1872 and/or the Copyright Act, 1957 and/or the Information Technology Act, 2000. I am aware that such action, either directly or indirectly, may constitute a punishable offence punishable with imprisonment for a term up to...

< Previous
I am ready to begin



## 7. Click on “I am ready to begin” to being your Mock Test

### Other Important Instructions

  
**M Sharma**

1. To login, enter your registration number and password following instructions provided to you by the invigilator.
2. Go through the various symbols used in the test and understand their meaning before you start the test.
3. The question paper consists of 3 (three) sections:
 

| Section | Test   |
|---------|--|
| I       | Verbal Ability and Reading Comprehension (VARC)  |
| II      | Data Interpretation and Logical Reasoning (DILR) |
| III     | Quantitative Ability (QA)                        |
4. For the Data Interpretation and Logical Reasoning (DILR) section, each situation/scenario consists of a group of four or six questions. Similarly, for Reading Comprehension, each passage consists of a group of 4 questions.
5. For an MCQ, a candidate will be given 3 (three) marks for a correct answer, -1 (minus one) mark for a wrong answer and a 0 (zero) mark for an un-attempted question.
6. For a Non-MCQ, a candidate will be given 3 (three) marks for a correct answer, and a 0 (zero) mark for a wrong answer and for an un-attempted question. There will be no negative mark for a wrong answer in a Non-MCQ.
7. An MCQ will have choices out of which only one will be the correct answer. The computer allotted to you at the test center runs on a specialized software that permits you to select only one answer for an MCQ. You will have to choose the correct answer by clicking on the radio button ( ) placed just before the option. For a Non-MCQ, you will have to enter the answer in the space provided on the screen using the on-screen keyboard.

I have read and understood all the above instructions. I have also read and understood clearly the instructions given on the admit card and shall follow the same. I also understand that in case I violate any of these instructions, my candidature is liable to be cancelled. I also confirm that at the start of the test all the computer hardware allotted to me are in proper working condition.

I will not disclose, publish, reproduce, transmit, store, or facilitate transmission and storage of the contents of the CAT or any information therein in whole or part thereof in any form or by any means, verbal or written, electronically or mechanically for any purpose. I am aware that this shall be in violation of the Indian Contract Act, 1872 and/or the Copyright Act, 1957 and/or the Information Technology Act, 2000. I am aware that such action, either directly or indirectly, may constitute a punishable offence punishable with imprisonment for a term up to...

< Previous
I am ready to begin



# CAT 2023



## 8. Candidates will see the first question of first section and the CAT Mock Test starts

CAT 2022 Mock Exam
Question Paper View Instruction

VARC
DILR
QA

Time Left : 39:45

Sections

VARC

The passage below is accompanied by a set of questions. Choose the best answer to each question.

For the Maya of the Classic period, who lived in Southern Mexico and Central America between 250 and 900 CE, the category of 'persons' was not coincident with human beings, as it is for us. That is, human beings were persons – but other, nonhuman entities could be persons, too. . . . In order to explore the slippage of categories between 'humans' and 'persons', I examined a very specific category of ancient Maya images, found painted in scenes on ceramic vessels. I sought out instances in which faces (some combination of eyes, nose, and mouth) are shown on inanimate objects. . . . Consider my iPhone, which needs to be fed with electricity every night, swaddled in a protective bumper, and enjoys communicating with other fellow-phone-beings. Does it have personhood (if at all) because it is connected to me, drawing this resource from me as an owner or source? For the Maya (who did have plenty of other communicating objects, if not smartphones), the answer was no. Nonhuman persons were not tethered to specific humans, and they did not derive their personhood from a connection with a human. . . . It's a profoundly democratising way of understanding the world. Humans are not more important persons – we are just one of many kinds of persons who inhabit this world. . . .

The Maya saw personhood as 'activated' by experiencing certain bodily needs and through participation in certain social activities. For example, among the faced objects that I examined, persons are marked by personal requirements (such as hunger, tiredness, physical closeness), and by community obligations (communication, interaction, ritual observance). In the images I examined, we see, for instance, faced objects being cradled in humans' arms; we also see them speaking to humans. These core elements of personhood are both turned inward, what the body or self of a person requires, and outward, what a community expects of the persons who are a part of it, underlining the reciprocal nature of community membership. . . .

Personhood was a nonbinary proposition for the Maya. Entities were able to be persons while

**Question No. 1**

On the basis of the passage, which one of the following worldviews can be inferred to be closest to that of the Classic Maya?

- A tribe that perceives its hunting weapons as sacred person-artefacts because of their significance to its survival.
- A tribe that perceives plants as person-plants because they form an ecosystem and are marked by needs of nutrition.
- A futuristic society that perceives robots to be persons as well as robots because of their similarity to humans.
- A tribe that perceives its utensils as person-utensils in light of their functionality and bodily needs.

0 Answered 1 Not Answered

23 Not Visited 0 Marked for Review

0 Answered & Marked for Review (will be considered for evaluation)

**VARC**

Choose a Question

|    |    |    |    |
|----|----|----|----|
| 1  | 2  | 3  | 4  |
| 5  | 6  | 7  | 8  |
| 9  | 10 | 11 | 12 |
| 13 | 14 | 15 | 16 |
| 17 | 18 | 19 | 20 |
| 21 | 22 | 23 | 24 |

Mark for Review & Next
Clear Response

Save & Next

Submit

Version : 17.07.00

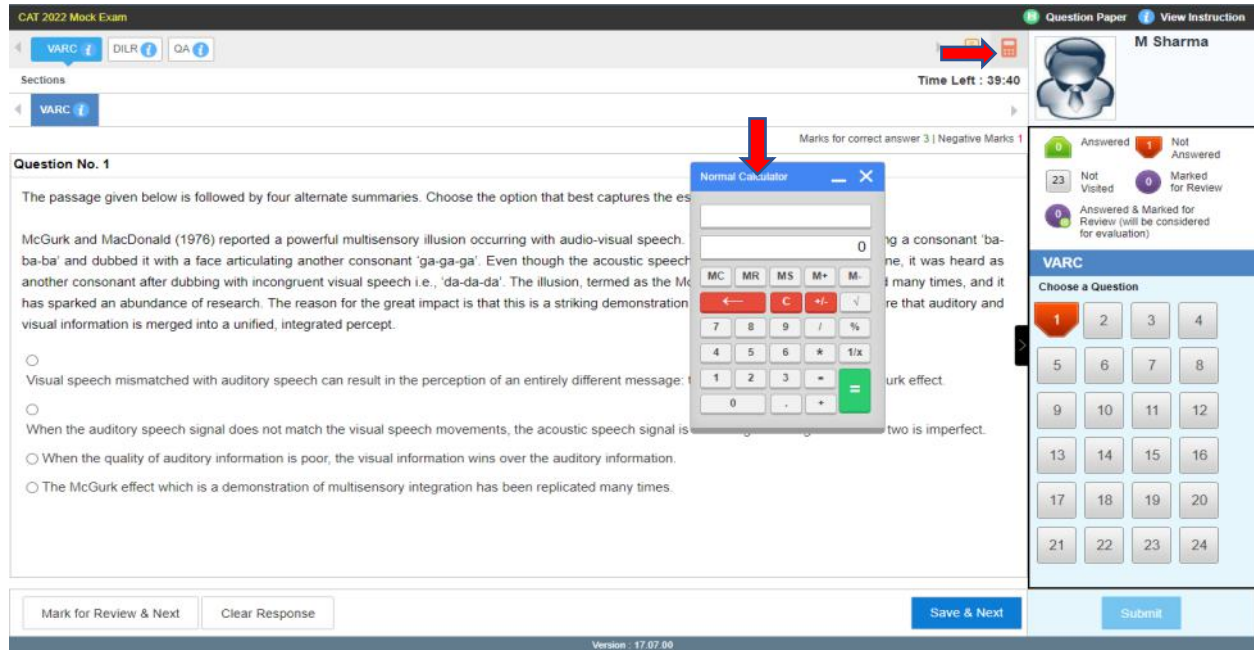
# CAT 2023



## Section B: General guide on various feature on Candidate Test Screen

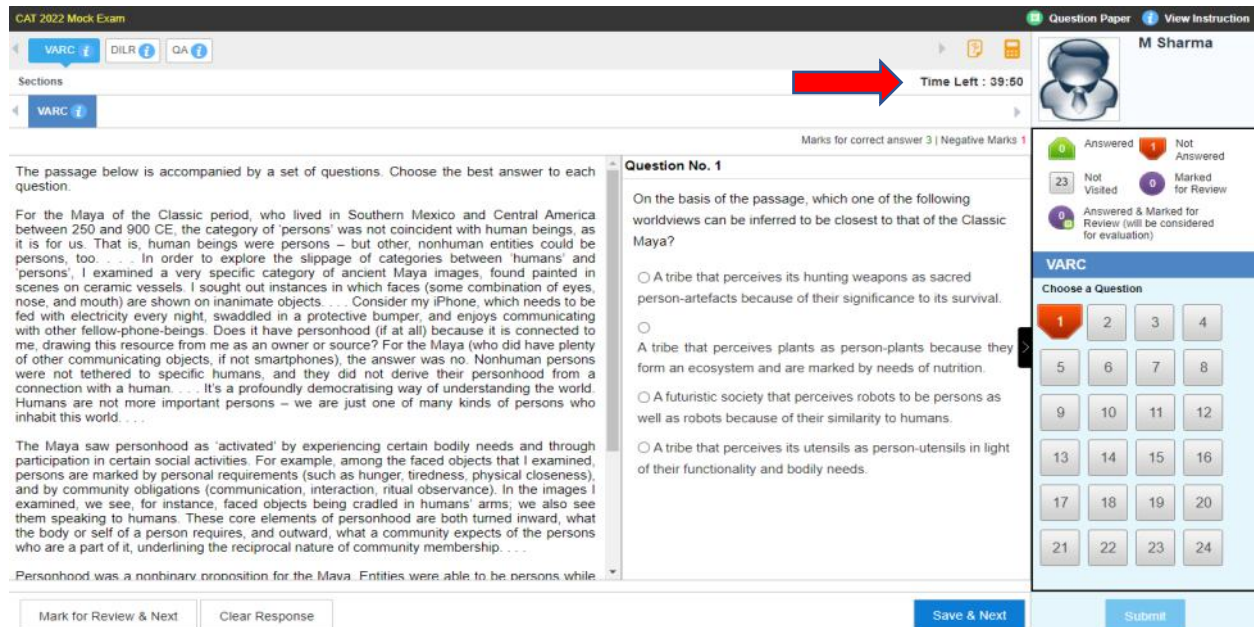
### 1. Calculator -

Calculator is available on the top, right-hand side of the screen.



### 2. Timer -

Candidate can check time left for a section looking at the timer on the top, right-hand side of the screen and just below the calculator. Total test time is 120 minutes for non -PwD candidate (40 minutes each for three sections).



# CAT 2023



### 3. Question Palette -

The Question Palette displayed on the right-hand side of the screen will show the status of each question using one of the following symbols:

| SR No. | Question Number with Status | Meaning  |
|--------|-----------------------------|--|
| A      |                             | You have not visited the question yet.                                       |
| B      |                             | You have visited the question but have not answered it.                      |
| C      |                             | You have answered the question but have not flagged it as Marked for Review. |
| D      |                             | You have not answered the question but have flagged it as Marked for Review. |
| E      |                             | You have answered the question as well as flagged it as Marked for Review.   |

### 4. Expand the question area -

Click on arrow “>”, which appears to the left side of Question Palette to maximize the Question Area. To view the Question Palette again, click on arrow “<”, which appears to the right side of Question Area.

### 5. Scrolling -

Click on to navigate to the bottom and Click on to navigate to the top of the Question Area without scrolling.

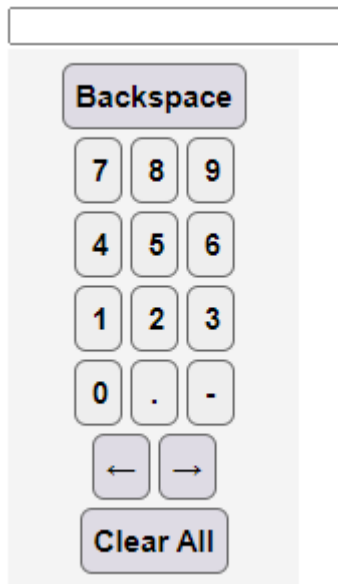


## CAT 2023



### 6. Answering a question –

a) Click on the question number in the Question Palette to go to that question directly. Select an answer for a multiple choice type question by clicking on the bubble placed before the choices in the form of radio buttons ( ). For Non-MCQ questions, type in the answer in the space provided on the screen using the on-screen keyboard.



b) Click on ‘**Save & Next**’ to save your answer for the current question and then go to the next question.

Alternatively, you may click on ‘**Mark for Review & Next**’ to save your answer for the current question and also to mark it for review, and then go to the next question.

**Caution:** Note that your answer for the current question will not be saved, if you navigate to another question directly by clicking on a question number without clicking ‘**Save & Next**’ or ‘**Mark for Review button & Next**’ button.

### 7. Changing the response –

a) To deselect your chosen answer, click on the **question number** on the palette and click on the ‘**Clear Response**’ button.

b) To change your chosen answer, click on the bubble of another option. To save your changed answer, you **MUST** click on the ‘**Save & Next**’ or ‘**Mark for Review & Next**’ button.

