

IBPS PO Prelims 2020 Memory Based – Solutions

S1. Ans.(e)

Sol. ACB is the correct sequence.

The role played by human rights organisations in documenting and questioning state functioning and excesses is a necessary component of civil society activism

S2. Ans.(e)

Sol. BCA is the correct sequence.

The C&AG's observations in its financial audit report relate to the denial of States' share in the divisible taxes pool.

S3. Ans.(b)

Sol. CAB is the correct sequence

Many countries have chosen to ignore the connection between biodiversity and well-being, and depleted ecological capital in pursuit of financial prosperity.

S4. Ans.(d)

Sol. BAC is the correct sequence.

Gandhi's repeated emphasis on service to all human beings from all traditions of thought was the essence of his non-violent democratic theory.

S5. Ans.(a)

Sol. The correct phrase to replace the incorrect phrase is "evidently collide". 'Collide' means hit by accident when moving. Since the sentence is in past perfect form, 'collided' should be used. All the other given options are either grammatically incorrect or contextually meaningless.

S6. Ans.(c)

Sol. The correct phrase to replace the incorrect phrase is "made vague promises". All the other given options are either grammatically incorrect or contextually meaningless.

S7. Ans.(c)

Sol. Option (c) is the correct choice.

Students feel autonomous when they are able to willingly devote time and energy to their studies

S8. Ans.(b)

Sol. Going through the given parts of the sentence it can be seen that given sentence is talking about the increase in the number of cases of COVID-19 in the capital. So, on the basis of this it can be seen that the correct arrangement would be CBDEA and the sentence thus formed is:

As many as 3,227 new COVID-19 cases were reported in the Capital in the past 24 hours taking the total number of cases to 2,76,325, according to a health bulletin released by the Delhi government.

Latest IBPS Interface

Video Solutions

**IBPS RRB 2020
Officer Scale-I
MAINS**

50+ TOTAL TESTS

S9. Ans.(a)

Sol. Given sentence is talking about the appeal made by the CBI and ED's regarding early hearing of the appeal against the 2G case verdict. So, on the basis of this information it can be seen that correct arrangement would be ABDEC and the sentence thus formed is:

The Delhi High Court allowed the CBI and ED's appeal for an early hearing on its leave to appeal against the 2G case verdict acquitting former Telecom Minister A. Raja and others.

S10. Ans.(c)

Sol. Given sentence is talking about the declaration of farmer outfits about intensifying their agitation. So, on the basis of this information it can be seen that correct arrangement would be DEABC and the sentence thus formed is:

Farmer outfits announced that they would intensify their agitation from October 1, which will include an indefinite "rail roko" protest and the social boycott of political leaders.

S11. Ans.(e)

Sol. Given sentence is correct as it is and requires no rearrangement. So, the correct answer choice is option (e).

S12. Ans.(d)

Sol. Given sentence is talking about the controversy surrounding the "Me Too" campaign and how it started. So, on the basis of this information it can be seen that correct arrangement would be BECDA and the sentence thus formed is:

The controversies surrounding 'Me Too' are complicated by the reality that the movement itself is a result of the failure of due process.

S13. Ans.(c)

Sol. Refer to the lines "students who learn through technology can create a set of skills that will help them throughout their own future careers" and "Many believe that it actually helps students stay engaged during class by using a familiar tool for academic learning." Hence, option (c) is correct.

S14. Ans.(d)

Sol. Refer to the lines "By incorporating modern technology like artificial intelligence, for instance, teachers **can develop more creative and innovative lesson plans** to hold the attention of their classes. Not to mention, as new methods of teaching develop, **so does the need for specialized professionals both within and outside of the education field.**" Hence, option (d) is correct.

S15. Ans.(e)

Sol. Refer to the sentence "Many believe that technology can enhance individual learning, removing educational boundaries that teachers may face. It enables online education, distance learning, and access to up-to-date information. Because each student interprets this information differently, technology can enable more research into subjects that are more difficult to learn. They can learn at their own pace." Hence option (e) is correct.

S16. Ans.(a)

Sol. Refer to the sentence “Educational technology is a fairly new field in the education sector, and not all teachers are ready to start implementing such technologically-driven plans.”

S17. Ans.(e)

Sol. Refer to the lines “However, the cost of education has significantly reduced, with options like online degrees and by *eliminating the need to buy physical textbooks*. By accessing scholarly articles from your university’s database, for example, you can easily choose *to continue your studies from another country or without leaving your home.*” “Typically, *free for students*, most academic journals will offer full digital versions of books originally produced in print”. Hence, option (e) is correct.

S18. Ans.(d)

Sol. The given sentence indicates that technology can not only helps students but also the education professionals. It helps in the overall growth and development of the students and education professionals. Thus, after carefully reading the passage, it can be inferred that technology should form an integral part of education system.

S19. Ans.(b)

Sol. ‘Frequently’ means regularly or habitually; often. Thus, regularly can replace the given word in the passage.

S20. Ans.(c)

Sol. Eliminating means completely remove or get rid of (something). Hence, removal is the synonym of the given word.

S21. Ans.(a)

Sol. The most suitable word to fill the blank is “products”. The phrase alongside the blank clearly mentions the products that can be classified under gaseous refinery. Hence, option (a) is the most appropriate choice.

S22. Ans.(b)

Sol. The most suitable word to fill the given blank is “consumed”. Since the given sentence explains the process of refinery desulfurization facilities, it can be understood that hydrogen is used to carry out several procedures in the refinery. Hence, option (b) is correct.

S23. Ans.(d)

Sol. The most suitable for the given blank is “significant”. All the other options are either grammatically incorrect or contextually meaningless.

S24. Ans.(a)

Sol. Since a drawback of refinery gas is mentioned in the given sentence, we can easily identify the word which is apt for the blank. Among the given words only “unsuitable” adheres to the grammar and context of the given passage. Hence, option (a) is the correct answer choice.

S25. Ans.(c)

Sol. The phrase alongside the blank has mentioned that ethane is used as a petrochemical feedstock, which implies that it is recovered in the refinery fuel system. Hence, option (c) i.e. “recovered” becomes the most viable answer choice.

S26. Ans.(d)

Sol. According to the context of the passage, the most suitable word for the given blank is “control. Hence, option (d) is the correct choice.

S27. Ans.(c)

Sol. Only sentence (iii) is correct.

In sentence (i), replace ‘for’ by ‘since’.

In sentence (ii) replace ‘of’ by ‘for’.

S28. Ans.(d)

Sol. Both the sentence (i) and (iii) are correct.

In Sentence (ii) ‘have’ should be replaced by ‘has’.

S29. Ans.(e)

Sol. All the given sentences are correct.

S30. Ans.(a)

Sol. Sentence (i) is correct.

In sentence (ii) ‘for’ should be replaced by ‘to’.

In sentence (iii) ‘has’ should be replaced by ‘is’.

S31. Ans.(b)

Sol. Required sum = $(64 - 30) + (72 - 32) + (76 - 48)$
 $= 34 + 40 + 28 = 102$

S32. Ans.(a)

Sol. Total people visited in park F = $(76 + 68) + 18 = 162$

So, number of boys visited in park F = $162 \times \frac{5}{9} = 90$

S33. Ans.(c)

Sol. Required percentage = $\frac{30}{64} \times 100 = 46.875 \approx 47\%$

S34. Ans.(b)

Sol. Required revenue = $24 \times 54 = 1296$ Rs.

NRA-CET Ready**BANK
MAHA PACK**Live Class, Video Course,
Test Series, eBooks**Bilingual (with eBooks)
12+3 Months Validity**

S35. Ans.(d)

Sol. Required percentage = $\frac{72-54}{54} \times 100$
 $= \frac{18}{54} \times 100 = 33\frac{1}{3}\% \approx 33\%$

S36. Ans.(a)

Sol. Pattern of series -

$$? = 9.8 + 0.9 = \mathbf{10.7}$$

$$10.7 - 1.8 = 8.9$$

$$8.9 + 2.7 = 11.6$$

$$11.6 - 3.6 = 8$$

$$8 + 4.5 = 12.5$$

S37. Ans.(e)

Sol. Pattern of series -

$$400 - (5^3 + 1) = 274$$

$$274 - (4^3 + 1) = 209$$

$$209 - (3^3 + 1) = 181$$

$$181 - (2^3 + 1) = 172$$

$$? = 172 - (1^3 + 1) = \mathbf{170}$$

S38. Ans.(b)

Sol. Pattern of series -

$$1 \times 1 = 1$$

$$? = 1 \times 3 = \mathbf{3}$$

$$3 \times 5 = 15$$

$$15 \times 7 = 105$$

$$105 \times 9 = 945$$

S39. Ans.(c)

Sol. Pattern of series -

$$12 \times 0.5 = 6$$

$$6 \times 1 = 6$$

$$6 \times 1.5 = 9$$

$$9 \times 2 = 18$$

$$18 \times 2.5 = 45$$

S40. Ans.(b)

Sol. Pattern of series -

$$34 \div 2 + 1 = 18$$

$$18 \div 2 + 1 = 10$$

$$10 \div 2 + 1 = 6$$

$$? = 6 \div 2 + 1 = \mathbf{4}$$

$$4 \div 2 + 1 = 3$$



S41. Ans.(b)**Sol.** Let sum invested by man = $100x$ And amount he got = $100x \times \frac{160}{100} = 160x$

Let rate of interest be 'r' % p.a.

ATQ -

$$100x \times r \times \frac{8}{100} = 160x - 100x$$

$$r = 7.5$$

$$\text{Required interest} = 9600 \times 7.5 \times \frac{4}{100} = 2880 \text{ Rs.}$$

S42. Ans.(a)**Sol.** Let efficiency of B = $5x$ unit/daySo, efficiency of A = $5x \times \frac{140}{100} = 7x$ unit/day

$$\text{Total work} = (7x + 5x) \times \frac{75}{8} = \frac{225x}{2} \text{ unit}$$

Total work done by A in 5 days = $7x \times 5 = 35x$ unit

$$\text{Total required days} = 5 + \frac{\frac{225x}{2} - 35x}{5x} = 20 \frac{1}{2} \text{ days}$$

S43. Ans.(b)**Sol.** Let length of train 'A' and platform each be 'L' meters

ATQ -

$$\frac{L+L}{36} = 54 \times \frac{5}{18}$$

$$L = 270 \text{ meters}$$

Let speed of train B be 's' km/hr

$$\frac{230+270}{25} = s \times \frac{5}{18}$$

$$S = 72 \text{ km/hr}$$

S44. Ans.(d)**Sol.** Let present age of A, B and C be x, y and z years respectively.

ATQ,

$$\Rightarrow \frac{x-4}{y-4} = \frac{3}{4}$$

$$4x - 3y = 4 \dots \dots (i)$$

$$\Rightarrow x + y + z = 26 \times 3 = 78 \dots \dots (ii)$$

$$\Rightarrow z = y - 11 \dots \dots (iii)$$

From (i), (ii) and (iii)

$$x = 25, y = 32, z = 21$$

So, present age of B = $y = 32$ years

S45. Ans.(a)

Sol. Let monthly salary = Rs 100x

ATQ

$$100x \times \frac{90}{100} \times \frac{70}{100} = 63x$$

Let total expense on medicine and groceries = $3y + 4y = 7y$

$$\text{So, } 7y = 63x$$

$$y = 9x$$

$$\text{Given, } 3y = 2700,$$

$$\text{So, } y = 900$$

$$\text{Now, } x = 100$$

$$\therefore \text{monthly salary of the man} = 100x = \text{Rs } 10,000$$

S46. Ans.(b)

Ratio of Milk and water in mixture = 60 : 40 = 3 : 2

Quantity of Milk left in mixture after 20 gm of mixture is taken out

$$= 60 \times \frac{3}{5} = 36 \text{ gm.}$$

$$\text{Quantity of water left} = 60 \times \frac{2}{5} = 24 \text{ gm}$$

$$\therefore \text{Required ratio} = \frac{36}{24+6} = 6 : 5$$

S47. Ans.(d)

Sol. Let radius of sphere and cylinder is 'r'.

$$\text{So, volume of sphere} = \frac{4}{3} \pi r^3$$

Volume of cylinder = Volume of sphere

$$\frac{4}{3} \pi r^3 = \pi r^2 h$$

$$h = \frac{4}{3} r$$

$$\text{TSA of sphere} = 4\pi r^2$$

$$\text{TSA of cylinder} = 2\pi r (r + h)$$


$$= 2\pi r \left(r + \frac{4}{3} r \right)$$

$$= \frac{14}{3} \pi r^2$$

$$\text{Required ratio} = \frac{4\pi r^2}{\frac{14}{3}\pi r^2} = \frac{6}{7}$$

$$= 6 : 7$$



TEST SERIES
 Bilingual
 VIDEO SOLUTIONS 

IBPS CLERK 2020

PRIME

125+ TESTS | eBOOKS

S48. Ans.(b)**Sol.** Let investment of P, Q, R be $2x$, $5x$ and $7x$ respectively.Let extra amount added by 'P' after six months be Rs. y

ATQ,

$$2x + y = \frac{1}{2} [5x + 7x]$$

$$2x + y = 6x$$

$$y = 4x$$

Ratio of profit share

$$P : Q : R = 2x \times 6 + (4x + 2x) \times 6 : 5x \times 12 : 7x \times 12$$

Q's share of profit = Rs 425

$$\Rightarrow 5 \rightarrow 425$$

$$\Rightarrow 1 \rightarrow 85$$

$$\Rightarrow (4 + 5 + 7) = 16 \rightarrow 16 \times 85 = 1360$$

Total profit = Rs. 1360

S49. Ans.(b)**Sol.** Let C.P. of LED = $100x$ Rs.M.P of LED = $160x$ Rs.

$$\begin{aligned} \text{First discount} &= 160x \times \frac{1}{8} \\ &= 20x \text{ Rs.} \end{aligned}$$

Second and third discount

$$(160x - 20x) \times \frac{(100-d)}{100} \times \frac{(100-25)}{100} = 84x$$

$$140x \times \frac{100-d}{100} \times \frac{3}{4} = 84x$$

$$21(100 - d) = 84 \times 20$$

$$21d = 2100 - 1680$$

$$d = \frac{420}{21}$$

$$d = 20\%$$

S50. Ans.(d)**Sol.** Speed of boat in still water = 12 kmphSpeed of Stream = x kmph

ATQ,

$$\frac{270}{(12-x)} = \left(100 + 66\frac{2}{3}\right)\% \text{ of } \frac{270}{12+x}$$

$$\Rightarrow \frac{270}{12-x} = \left(1 + \frac{2}{3}\right) \times \frac{270}{12+x}$$

$$\Rightarrow \frac{270}{12-x} = \frac{5}{3} \times \frac{270}{12+x}$$

$$\Rightarrow (12 + x) \times 3 = 5 \times (12 - x)$$

$$\Rightarrow x = 3$$

So, speed of stream = $x = 3$ kmph

S51. Ans.(a)

Sol. I. $x^2 - 8x + 15 = 0$

$x^2 - 3x - 5x + 15 = 0$

$(x - 3)(x - 5) = 0$

$x = 3, 5$

II. $2y^2 - 7y + 5 = 0$

$2y^2 - 2y - 5y + 5 = 0$

$(y - 1)(2y - 5) = 0$

$y = 1, \frac{5}{2}$

$x > y$

S52. Ans.(d)

Sol. I. $2x^2 + x - 28 = 0$

$2x^2 + 8x - 7x - 28 = 0$

$2x(x + 4) - 7(x + 4) = 0$

$(2x - 7)(x + 4) = 0$

$x = -4, \frac{7}{2}$

II. $2y^2 - 23y + 56 = 0$

$2y^2 - 16y - 7y + 56 = 0$

$2y(y - 8) - 7(y - 8) = 0$

$(2y - 7)(y - 8) = 0$

$y = \frac{7}{2}, 8$

$y \geq x$

**S53. Ans.(e)**

Sol. I. $2x^2 - 7x - 60 = 0$

$2x^2 - 15x + 8x - 60 = 0$

$x(2x - 15) + 4(2x - 15) = 0$

$(x + 4)(2x - 15) = 0$

$x = -4, \frac{15}{2}$

II. $3y^2 + 13y + 4 = 0$

$3y^2 + 12y + y + 4 = 0$

$3y(y + 4) + 1(y + 4) = 0$

$(3y + 1)(y + 4) = 0$

$y = -\frac{1}{3}, -4$

No relation between x and y

S54. Ans.(e)

Sol. I. $x^2 - 17x - 84 = 0$

$x^2 + 4x - 21x - 84 = 0$

$(x + 4)(x - 21) = 0$

$x = -4, 21$

II. $y^2 + 4y - 117 = 0$

$y^2 - 9y + 13y - 117 = 0$

$(y - 9)(y + 13) = 0$

$y = 9, -13$

No relation between x and y

S55. Ans.(c)

Sol. I. $x^2 = 9^2$

$x = 9$

II. $(y - 8)^2 = 3^2$

$y = 11$

$y > x$

S56. Ans.(b)**Sol.** Total items B sold by store on Monday and Friday together

$= \frac{240}{48} \times 32 + \frac{340}{68} \times 22$

$= 160 + 110$

$= 270$

Total items C sold by store in Wednesday & Thursday together

$= \frac{420}{35} \times 20 + \frac{360}{24} \times 20$

$= 240 + 300$

$= 540$

Required percentage = $\frac{540-270}{540} \times 100$

$= \frac{270}{540} \times 100$

$= 50\%$

S57. Ans.(c)**Sol.** Average number of items B sold by store on Tuesday & Thursday

$= \frac{\frac{320}{40} \times 48 + \frac{360}{24} \times 56}{2}$

$= \frac{384 + 840}{2}$

$= 612$

Average number of items A sold by store on Thursday & Friday

$= \frac{360 + 340}{2}$

$= \frac{700}{2}$

$= 350$

Required difference = $612 - 350 = 262$

adda247

NRA-CET Ready

BANK

Useful for Bank & Insurance Exams

TEST PACK**12 Months Subscription**

S58. Ans.(a)**Sol.** Total items B sold by store on Sunday

$$= \frac{360}{24} \times 56 \times \frac{125}{100}$$

$$= 1050$$

Total items C sold by store on Sunday

$$= \frac{340}{68} \times 10 \times \frac{400}{100}$$

$$= 200$$

Total items B & items C sold by store on Sunday = 1050 + 200 = 1250

S59. Ans.(c)**Sol.** Total items C sold on Wednesday = $\frac{420}{35} \times 20$

$$= 240$$

Total items C sold on Monday & Tuesday together

$$= \frac{240}{48} \times 20 + \frac{320}{40} \times 12$$

$$= 100 + 96$$

$$= 196$$

Required percentage = $\frac{240-196}{196} \times 100$

$$= \frac{44}{196} \times 100$$

$$= 22\frac{22}{49}\%$$

**S60. Ans.(b)****Sol.** Required ratio = $\frac{\frac{240}{48} \times 100}{\frac{360}{24} \times 100}$

$$= \frac{500}{1500}$$

$$= 1 : 3$$

Solutions (61 - 65):Total number of female employee who represent A and B = $420 \times 2 = 840$

Let, Number of male employee who represent A = a

And, Number of male employee who represent B = b

ATQ,

$$a + b = 1620 \dots(i)$$

$$\frac{2}{3}a + \frac{2}{5}b = 840 \dots(ii)$$

On solving (i) & (ii)

$$a = 720, b = 900$$

Number of female employees who represent A

$$= \frac{2}{3} \times 720$$

$$= 480$$

Number of female employees who represent B

$$= \frac{2}{5} \times 900$$

$$= 360$$

$$\text{Total Female employee who represent C} = 480 \times \frac{125}{100} = 600$$

$$\text{Total male employee who represent C} = 360 \times \frac{4}{3} = 480$$

Companies	Male	Female
A	720	480
B	900	360
C	480	600

S61. Ans.(a)

Sol. Total employee who represent A = $720 + 480 = 1200$

$$\text{Required percentage} = \frac{1200-900}{900} \times 100$$

$$= 33\frac{1}{3}\%$$

S62. Ans.(c)

Sol. Total employee who represent B & C who do not have MBA degree

$$= (900 + 480) \times \frac{80}{100} + (360 + 600) \times \frac{75}{100}$$

$$= 1104 + 720$$

$$= 1824$$

S63. Ans.(c)

Sol. Required ratio = $\frac{(900+480)}{(480+600)}$

$$= 23 : 18$$

S64. Ans.(a)

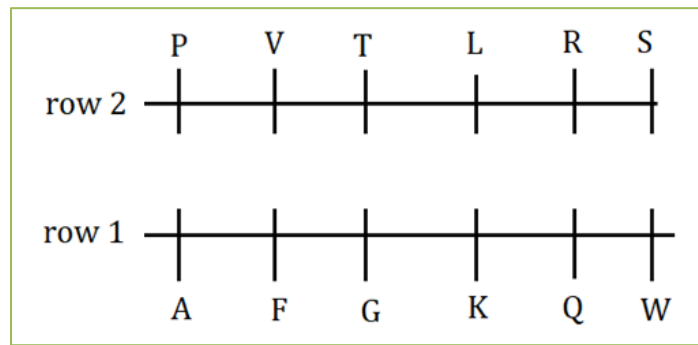
Sol. Required difference = $480 - 360$

$$= 120$$

S65. Ans.(a)

Sol. Required average = $\frac{360+600}{2} = 480$

Direction (66-70):



S66. Ans.(d)

S67. Ans.(b)

S68. Ans.(e)

S69. Ans.(d)

S70. Ans.(c)

Direction (71-75):

WORDS	CODES
work	jk
is	rt
worship	pq
hard	mn
always	uv
do	st
Time/passes	ab/ef

S71. Ans.(d)

S72. Ans.(a)

S73. Ans.(b)

S74. Ans.(d)

S75. Ans.(e)

Direction (76-80):

Persons	Fruits
G	Apple
E	Banana
B	Kiwi
D	Orange
A	Guava
C	Litchi
F	Grapes



IBPS PO PRELIMS 2020

Memory Based Package

- Based on Papers of 3rd & 10th Oct. 2020 | 6 PM - 9 PM
- 4 Full Length Mocks
- With Live Mock Discussion

Bilingual

S76. Ans.(a)

S77. Ans.(e)

S78. Ans.(c)

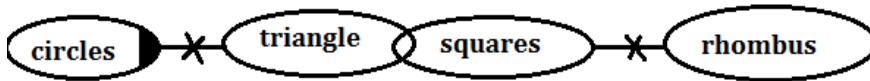
S79. Ans.(b)

S80. Ans.(c)

Direction (81-84):

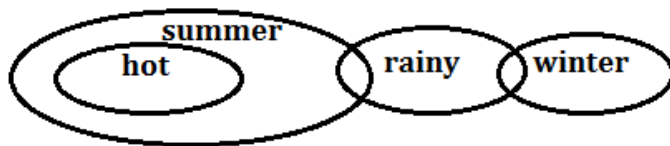
S81. Ans.(a)

Sol.



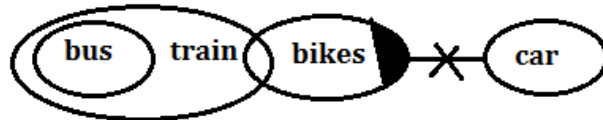
S82. Ans.(d)

Sol.



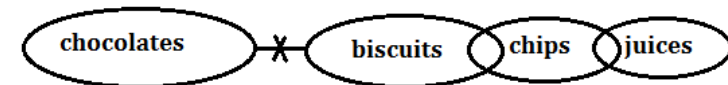
S83. Ans.(a)

Sol.



S84. Ans.(c)

Sol.



Solutions (85-89):

Date	7 th	16 th
March	A (Delhi)	D (Pune)
April	F (Jaipur)	C (Varanasi)
May	B (Chennai)	E (Indore)

S85. Ans.(d)

S86. Ans.(b)

S87. Ans.(b)

S88. Ans.(c)

S89. Ans.(b)

Solutions (90-92):

S90. Ans.(a)

Sol. I. $H > F$ (True) **II.** $K \leq G$ (False)

S91. Ans.(d)

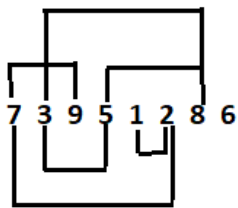
Sol. I. $P > Q$ (False) **II.** $Q \geq X$ (False)

S92. Ans.(a)

Sol. I. $Q \leq N$ (True) **II.** $W \geq O$ (False)

S93. Ans.(e)

Sol.



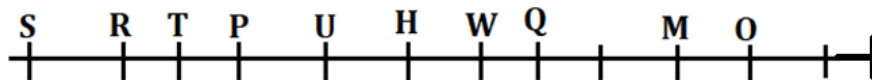
S94. Ans.(d)

Sol.

ALONGSIDE
AEIODGLNS



Solutions (95-99):



S95. Ans.(b)

S96. Ans.(e)

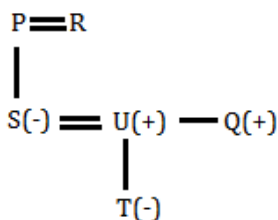
S97. Ans.(d)

S98. Ans.(c)

S99. Ans.(e)

S100. Ans.(e)

Sol.



TEST SERIES

Bilingual

VIDEO SOLUTIONS



**IBPS PO 2020
MAINS**

40 TOTAL TESTS

BOOKS

Visit: publications.adda247.com & store.adda247.com
 For any information, mail us at publications@adda247.com